

## Wireless Collaboration Systems

# ShareLink 200 N

Collaboration Gateway – Network Version



# Safety Instructions

## Safety Instructions • English

**WARNING:** This symbol, ⚠, when used on the product, is intended to alert the user of the presence of uninsulated dangerous voltage within the product's enclosure that may present a risk of electric shock.

**ATTENTION:** This symbol, ⚠, when used on the product, is intended to alert the user of important operating and maintenance (servicing) instructions in the literature provided with the equipment.

For information on safety guidelines, regulatory compliances, EMI/EMF compatibility, accessibility, and related topics, see the Extron Safety and Regulatory Compliance Guide, part number 68-290-01, on the Extron website, [www.extron.com](http://www.extron.com).

## Instructions de sécurité • Français

**AVERTISSEMENT :** Ce pictogramme, ⚠, lorsqu'il est utilisé sur le produit, signale à l'utilisateur la présence à l'intérieur du boîtier du produit d'une tension électrique dangereuse susceptible de provoquer un choc électrique.

**ATTENTION :** Ce pictogramme, ⚠, lorsqu'il est utilisé sur le produit, signale à l'utilisateur des instructions d'utilisation ou de maintenance importantes qui se trouvent dans la documentation fournie avec le matériel.

Pour en savoir plus sur les règles de sécurité, la conformité à la réglementation, la compatibilité EMI/EMF, l'accessibilité, et autres sujets connexes, lisez les informations de sécurité et de conformité Extron, réf. 68-290-01, sur le site Extron, [www.extron.com](http://www.extron.com).

## Sicherheitsanweisungen • Deutsch

**WARNUNG:** Dieses Symbol ⚠ auf dem Produkt soll den Benutzer darauf aufmerksam machen, dass im Inneren des Gehäuses dieses Produktes gefährliche Spannungen herrschen, die nicht isoliert sind und die einen elektrischen Schlag verursachen können.

**VORSICHT:** Dieses Symbol ⚠ auf dem Produkt soll dem Benutzer in der im Lieferumfang enthaltenen Dokumentation besonders wichtige Hinweise zur Bedienung und Wartung (Instandhaltung) geben.

Weitere Informationen über die Sicherheitsrichtlinien, Produkthandhabung, EMI/EMF-Kompatibilität, Zugänglichkeit und verwandte Themen finden Sie in den Extron-Richtlinien für Sicherheit und Handhabung (Artikelnummer 68-290-01) auf der Extron-Website, [www.extron.com](http://www.extron.com).

## Instrucciones de seguridad • Español

**ADVERTENCIA:** Este símbolo, ⚠, cuando se utiliza en el producto, avisa al usuario de la presencia de voltaje peligroso sin aislar dentro del producto, lo que puede representar un riesgo de descarga eléctrica.

**ATENCIÓN:** Este símbolo, ⚠, cuando se utiliza en el producto, avisa al usuario de la presencia de importantes instrucciones de uso y mantenimiento recogidas en la documentación proporcionada con el equipo.

Para obtener información sobre directrices de seguridad, cumplimiento de normativas, compatibilidad electromagnética, accesibilidad y temas relacionados, consulte la Guía de cumplimiento de normativas y seguridad de Extron, referencia 68-290-01, en el sitio Web de Extron, [www.extron.com](http://www.extron.com).

## Инструкция по технике безопасности • Русский

**ПРЕДУПРЕЖДЕНИЕ:** Данный символ, ⚠, если указан на продукте, предупреждает пользователя о наличии неизолированного опасного напряжения внутри корпуса продукта, которое может привести к поражению электрическим током.

**ВНИМАНИЕ:** Данный символ, ⚠, если указан на продукте, предупреждает пользователя о наличии важных инструкций по эксплуатации и обслуживанию в руководстве, прилагаемом к данному оборудованию.

Для получения информации о правилах техники безопасности, соблюдении нормативных требований, электромагнитной совместимости (ЭМП/ЭДС), возможности доступа и других вопросах см. руководство по безопасности и соблюдению нормативных требований Extron на сайте Extron: [www.extron.com](http://www.extron.com), номер по каталогу - 68-290-01.

## 安全说明 • 简体中文

**警告:** ⚠ 产品上的这个标志意在警告用户该产品机壳内有暴露的危险电压, 有触电危险。

**注意:** ⚠ 产品上的这个标志意在提示用户设备随附的用户手册中有重要的操作和维护(维修)说明。

关于我们产品的安全指南、遵循的规范、EMI/EMF 的兼容性、无障碍使用的特性等相关内容, 敬请访问 Extron 网站 [www.extron.com](http://www.extron.com), 参见 Extron 安全规范指南, 产品编号 68-290-01。

## 安全記事 • 繁體中文

**警告:** ⚠ 若產品上使用此符號, 是為了提醒使用者, 產品機殼內存在著可能會導致觸電之風險的未絕緣危險電壓。

**注意:** ⚠ 若產品上使用此符號, 是為了提醒使用者, 設備隨附的用戶手冊中有重要的操作和維護(維修)說明。

有關安全性指導方針、法規遵守、EMI/EMF 相容性、存取範圍和相關主題的詳細資訊, 請瀏覽 Extron 網站: [www.extron.com](http://www.extron.com), 然後參閱《Extron 安全性與法規遵守手冊》, 準則編號 68-290-01。

## 安全上のご注意 • 日本語

**警告:** この記号 ⚠ が製品上に表示されている場合は、筐体内に絶縁されていない高電圧が流れ、感電の危険があることを示しています。

**注意:** この記号 ⚠ が製品上に表示されている場合は、本機の取扱説明書に記載されている重要な操作と保守(整備)の指示についてユーザーの注意を喚起するものです。

安全上のご注意、法規遵守、EMI/EMF適合性、その他の関連項目については、エクストロンのウェブサイト [www.extron.com](http://www.extron.com) より「Extron Safety and Regulatory Compliance Guide」(P/N 68-290-01)をご覧ください。

## 안전 지침 • 한국어

**경고:** 이 기호 ⚠ 가 제품에 사용될 경우, 제품의 인클로저 내에 있는 접지되지 않은 위험한 전류로 인해 사용자가 감전될 위험이 있음을 경고합니다.

**주의:** 이 기호 ⚠ 가 제품에 사용될 경우, 장비와 함께 제공된 책자에 나와 있는 주요 운영 및 유지보수(정비) 지침을 경고합니다.

안전 가이드라인, 규제 준수, EMI/EMF 호환성, 접근성, 그리고 관련 항목에 대한 자세한 내용은 Extron 웹 사이트([www.extron.com](http://www.extron.com))의 Extron 안전 및 규제 준수 안내서, 68-290-01 조항을 참조하십시오.

## FCC Class A Notice

This equipment has been tested and found to comply with the limits for a Class A digital device, pursuant to part 15 of the FCC rules. The Class A limits provide reasonable protection against harmful interference when the equipment is operated in a commercial environment. This equipment generates, uses, and can radiate radio frequency energy and, if not installed and used in accordance with the instruction manual, may cause harmful interference to radio communications. Operation of this equipment in a residential area is likely to cause interference. This interference must be corrected at the expense of the user.

**NOTE:** For more information on safety guidelines, regulatory compliances, EMI/EMF compatibility, accessibility, and related topics, see the “[Extron Safety and Regulatory Compliance Guide](#)” on the Extron website.

# Conventions Used in this Guide

## Notifications

The following notifications are used in this guide:

**ATTENTION:** Attention indicates a situation that may damage or destroy the product or associated equipment.

**NOTE:** A note draws attention to important information.

## Specifications Availability

Product specifications are available on the Extron website, [www.extron.com](http://www.extron.com).

## Copyright

© 2015 Extron Electronics. All rights reserved.

## Trademarks

All trademarks mentioned in this guide are the properties of their respective owners.

**The following registered trademarks<sup>®</sup>, registered service marks<sup>SM</sup>, and trademarks<sup>TM</sup> are the property of RGB Systems, Inc. or Extron Electronics:**

Registered Trademarks <sup>®</sup>
AVTrac, Cable Cubby, CrossPoint, eBUS, EDID Manager, EDID Minder, Extron, Flat Field, GlobalViewer, Hideaway, Inline, IP Intercom, IP Link, Key Minder, LockIt, MediaLink, PlenumVault, PoleVault, PowerCage, Pure3, Quantum, SoundField, SpeedMount, SpeedSwitch, System <i>INTEGRATOR</i> , TeamWork, TouchLink, V-Lock, VersaTools, VN-Matrix, VoiceLift, WallVault, WindoWall, XTP, and XTP Systems
<b>Registered Service Mark<sup>SM</sup> :</b> S3 Service Support Solutions
Trademarks <sup>TM</sup>
AAP, AFL (Accu-Rate Frame Lock), ADSP (Advanced Digital Sync Processing), Auto-Image, CableCover, CDRS (Class D Ripple Suppression), DDSP (Digital Display Sync Processing), DMI (Dynamic Motion Interpolation), Driver Configurator, DSP Configurator, DSVP (Digital Sync Validation Processing), DTP, EQIP, FastBite, FOXBOX, Global Configurator, IP Intercom HelpDesk, LinkLicense, MAAP, MicroDigital, MirrorOp, ProDSP, QS-FPC (QuickSwitch Front Panel Controller), Scope-Trigger, ShareLink, SIS (Simple Instruction Set), Skew-Free, SpeedNav, Triple-Action Switching, WebShare, XTRA, ZipCaddy, ZipClip

# Contents

---

## **Introduction..... 1**

About the ShareLink 200 N .....	1
Features .....	2

---

## **Installation..... 3**

Rear Panel Features and Cabling.....	3
Front Panel Features and Cabling .....	4
Bottom Panel Features .....	4
Setting Up the Standby Screen .....	5
Using the Whiteboard Feature.....	6
Using the USB Player .....	7

---

## **Operation Using a Computer ..... 8**

Connecting a Computer to the ShareLink 200 N.....	8
Connecting through an External WAP .....	8
Connecting through a Network Hub, Switch, or Router.....	8
Setting Up the ShareLink 200 Software .....	9
Running the ShareLink 200 Lite Software .....	9
Downloading and Installing the ShareLink 200 Pro Software .....	10
Using the ShareLink 200 Software.....	12
Presenting the Computer Screen (Share my Screen Tab).....	12
Presenting a Media File (Share Media Tab) ....	13
Using the Software Menu.....	14
Sharing on Multiple Screens .....	15
Creating a USB Thumb-drive App .....	15
Creating a Room File .....	16

---

## **Operation Using a Mobile Device..... 17**

Downloading MirrorOp for Extron ShareLink .....	17
Using MirrorOp for Extron ShareLink.....	17
Connecting to a Receiver.....	17

Main Menu Overview .....	18
Presenting Documents and Photos.....	19
Presenting Dropbox Files .....	22
Presenting Web Pages .....	23
Presenting the Device Camera.....	24
Presenting Device Screenshots.....	24
Making Annotations .....	25
Settings .....	25
Downloading MirrorOp Sender for Galaxy .....	26
Using MirrorOp Sender for Galaxy .....	26

---

## **Using the Embedded Web Pages ..... 27**

Opening the Embedded Web Pages.....	27
Watching a Presentation (WebShare).....	28
Moderating a Presentation.....	29
Configuring ShareLink 200 N Settings .....	30
Device Setup .....	31
Network Setup .....	32
SNMP Setup .....	33
OSD Setup .....	34
WebShare Setup .....	35
Change Passwords .....	36
Firmware Update .....	37
Reset to Default.....	37
Reboot System.....	38

---

## **Reference Information ..... 39**

Mounting .....	39
Wall Mounting.....	39
Rack Mounting .....	40
Under-desk and Furniture Mounting.....	40
Downloading ShareLink 200 N Firmware .....	41

---

## **Extron Warranty ..... 42**



# Introduction

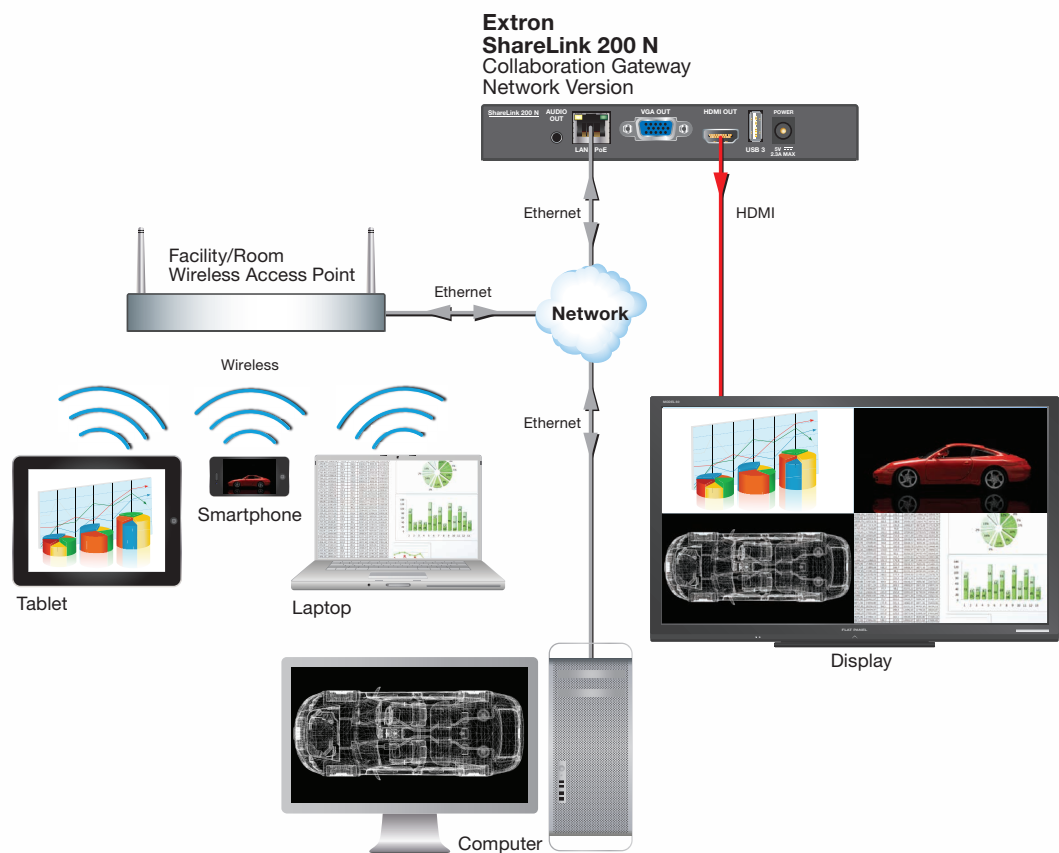
This section covers the following:

- [About the ShareLink 200 N](#)
- [Features](#)

## About the ShareLink 200 N

The Extron ShareLink 200 N Collaboration Gateway – Network Version allows users to present wirelessly from a mobile device or computer onto a display device. It is compatible with Windows® and OS X® computers as well as Android™ and Apple® smartphones and tablets.

To allow wireless connection, the ShareLink 200 N must be integrated into an existing network that has wireless capability. Users can then connect to the wireless access point (WAP) through Wi-Fi to access the ShareLink 200 N.



**Figure 1. ShareLink 200 N Application Diagram**

## Features

- **Wirelessly share content from personal mobile devices** — Allows users to connect a wide variety of devices to the system wirelessly or through a wired LAN connection.
- **Outputs** — HDMI connector, 15-pin HD connector, 3.5 mm stereo audio mini jack
- **Supports Microsoft Windows and OS X computers as well as Apple and Android smartphones and tablets**
- **Full screen or four-window display** — Enables full screen display of content from a single personal device or simultaneous display of multiple devices into four windows on a single display.
- **Dropbox integration within the MirrorOp for Extron ShareLink app provides easy access to content stored in the cloud.**
- **Content sharing from a computer to as many as four ShareLink 200 N units** — Allows a Windows or OS X computer to send content to multiple ShareLink 200 N units on the network, supporting up to four displays.
- **Full-motion video playback from laptops** — Enables a Windows or OS X computer to send full motion video with audio to the display for a smooth viewing experience.
- **Supports display of documents, graphics, images, and videos directly from a USB flash drive** — Enables content presentation without requiring a laptop or computer.
- **WebShare technology enables attendees to view slide images on personal devices via a Web browser** — Enables meeting content to display on each participant's mobile device, ensuring visibility regardless of sight lines.
- **Power over Ethernet, or PoE, eliminates the need for a local power supply** — Offers easy installation, reduced labor, and fewer devices to install. Data and power are delivered over the single cable.
- **USB ports for peripheral support** — Allows connection of a USB keyboard or mouse, and enables simple annotation capabilities with devices such as an interactive whiteboard.
- **HDMI and VGA video outputs** — Offers flexibility to work with digital and analog display devices or a system switcher to easily add wireless capabilities to existing video systems.
- **SNMP support for remote monitoring** — Supports network monitoring for the operational health of network-attached devices.



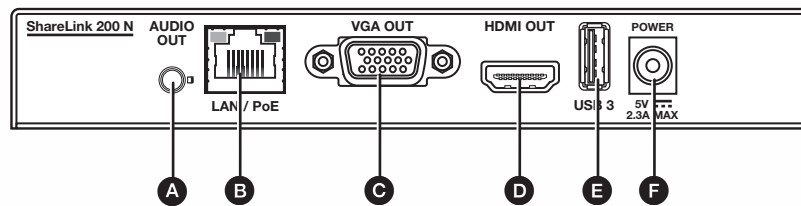
# Installation

This section covers the following:

- [Rear Panel Features and Cabling](#)
- [Front Panel Features and Cabling](#)
- [Bottom Panel Features](#)
- [Setting up the Standby Screen](#)

## Rear Panel Features and Cabling

The following section covers rear panel features and cabling procedures. If mounting is necessary before connecting cables, see [Mounting](#) on page 39.



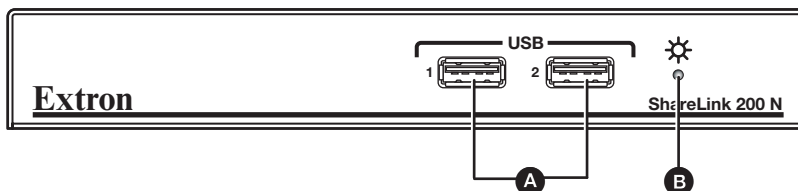
**Figure 2.** Rear Panel

- A Audio output** — (Optional) connect a 3.5 mm audio output cable between this female audio jack and the audio input of a display or audio amplifier.
- B RJ-45 connector** — Use an ethernet cable to connect a network switch, hub, router, or PC to this female RJ-45 connector.
- C VGA output** — (Optional) Connect a VGA display device into this female 15-pin HD connector.
- D HDMI output** — Connect an HDMI display device into this female HDMI connector.
- E USB port** — (Optional) Connect a USB drive to this USB type A connector to present documents, photos, videos, or audio files using the ShareLink USB player feature ([figure 4](#), ③ on page 5).
- F Power input** — Connect the included power supply to the power input (see the Attention on the next page for important information).

**ATTENTION:**

- This product is intended to be supplied by a Listed Power Unit marked “Class 2” or “LPS,” rated 5 VDC, 2.6 A minimum. Always use a power supply supplied by or specified by Extron. Use of an unauthorized power supply voids all regulatory compliance certification and may cause damage to the supply and the end product.
- Ce produit est destiné à une utilisation avec une source d’alimentation listée UL avec l’appellation « Classe 2 » ou « LPS » et normée 5 Vcc, 2,6 A minimum. Utilisez toujours les sources d’alimentation recommandées par Extron. L’utilisation d’une source d’alimentation non autorisée annule toute conformité réglementaire et peut endommager la source d’alimentation ainsi que le produit final.
- Unless otherwise stated, the AC/DC adapters are not suitable for use in air handling spaces or in wall cavities.
- Sauf mention contraire, les adaptateurs AC/DC ne sont pas appropriés pour une utilisation dans les espaces d’aération ou dans les cavités murales.
- The installation must always be in accordance with the applicable provisions of National Electrical Code ANSI/NFPA 70, article 725 and the Canadian Electrical Code part 1, section 16. The power supply shall not be permanently fixed to a building structure or similar structure.
- Cette installation doit toujours être en accord avec les mesures qui s’applique au National Electrical Code ANSI/NFPA 70, article 725, et au Canadian Electrical Code, partie 1, section 16. La source d’alimentation ne devra pas être fixée de façon permanente à une structure de bâtiment ou à une structure similaire.

## Front Panel Features and Cabling



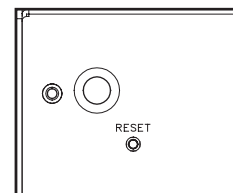
**Figure 3. Front Panel**

- A USB ports** — Connect a USB keyboard or mouse to these USB type A connectors to setup and control the ShareLink 200 N, and to use the Whiteboard feature (see [figure 4, 2](#) on the next page).
- B Power LED** — Lights green when the unit is powered on.

## Bottom Panel Features

The bottom panel contains a reset button for resetting the device, if necessary. To reset the ShareLink 200 N:

1. Disconnect power from the device.
2. Press the reset button using a small tool (such as a paperclip).
3. While pressing the reset button, apply power to the device and hold the reset button down for at least 10 seconds. After 10 seconds, the reset process starts on the device.



## Setting Up the Standby Screen

Once the ShareLink 200 N is connected and powered on, the default standby screen (figure 4) appears on the display.



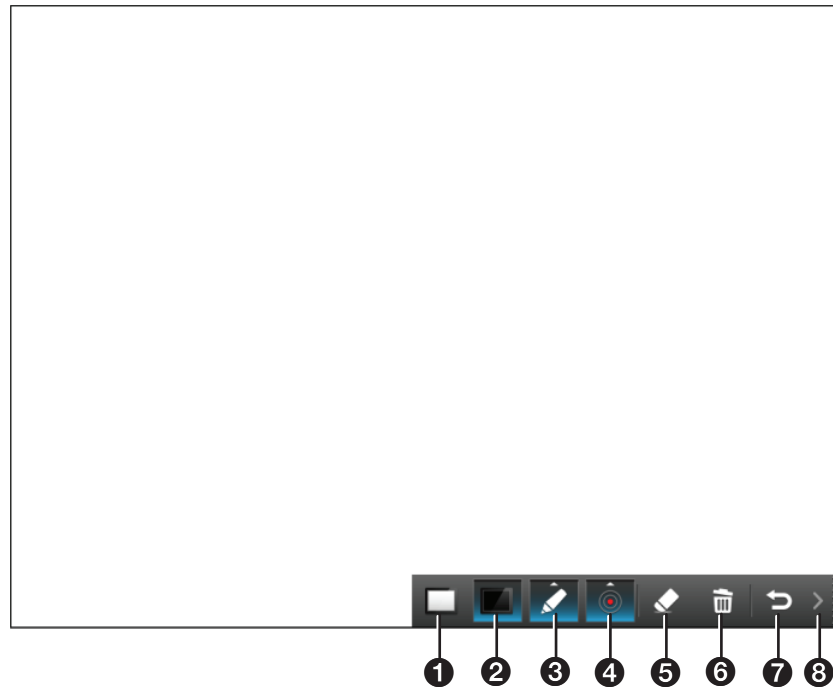
**Figure 4. Standby Screen**

- 1 Instructional screen** — Provides instructions for starting a presentation. The background image of the instructional screen can be customized (see [OSD Setup](#) on page 34).
- 2 Whiteboard icon** (📝) — Click to use the display as a whiteboard. This feature allows the presenter to draw on a blank screen using a mouse or touchscreen (see [Using the Whiteboard Feature](#) on the next page).
- 3 USB Player icon** (📁) — Click to access the USB Player. This feature allows the presenter to access photos, videos, audio files, and documents directly from the connected USB drive (see [Using the USB Player](#) on page 7).
- 4 IP address** — Use this IP address to identify and access the ShareLink during connection (see [Setting up the ShareLink 200 Software](#) on page 9).
- 5 Receiver hostname** — Use this hostname to identify and access the ShareLink during connection.
- 6 Code** — Use this code to access the ShareLink receiver through the software (see [Connecting to the ShareLink 200 N Receiver](#) on page 11). The code can be customized or disabled (see [Device Setup](#) on page 31).

## Using the Whiteboard Feature

To use the Whiteboard feature, click the Whiteboard icon on the standby screen (**figure 4**, **2**, on the previous page).

The Whiteboard screen appears:



**Figure 5. Whiteboard Screen**

- 1 Whiteboard** — Draw on a white background.
- 2 Blackboard** — Draw on a black background.
- 3 Pen mode** — There are two modes for using the pen (click this button to switch between modes):
  - Default mode: allows the user to draw without erasing previous strokes.
  - One-stroke mode: allows the user to draw only one stroke at a time (the previous annotation is cleared when a new stroke is made).
- 4 Pen color and size** — Select pen color (red, green, or blue), and pen size.
- 5 Eraser** — Erase selected parts within drawing.
- 6 Delete** — Delete entire drawing on the screen.
- 7 Return** — Return to the standby screen.
- 8 Minimize/Open** — Minimize or open the menu.

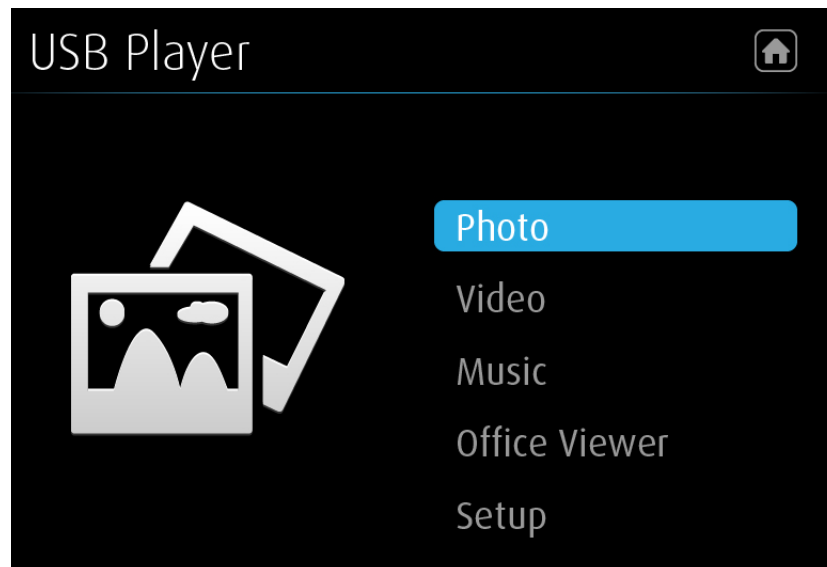
## Using the USB Player

This feature allows the presenter to display photos, videos, audio files, and documents from a USB drive connected to the rear panel USB port (see **figure 2**, **E** on page 3). To use the USB Player:

1. Ensure that a USB drive is connected to the USB port on the rear panel (see **figure 2**, **E**).

**NOTE:** The USB drive connected to this port must be FAT32 formatted and single partition. Also, external hard drives must use external power (hard drives cannot be powered from this USB port).

2. Click the USB Player icon on the standby screen (see **figure 4**, **3** on page 5). The USB Player screen opens:



**Figure 6. USB Player Screen**

**Home icon** (🏠) – Return to standby screen.

**Photo** – Enter photo viewer.

**Video** – Enter video player.

**Music** – Enter music player.

**Office Viewer** – Enter Office Viewer (to view Microsoft Office documents).

**Setup** – Enter Setup page.

**NOTE:**

The following file formats are supported:

- **Image:** JPG, BMP, PNG, GIF
- **Video:** MP4, MPG, MPEG, MPEG-2 TS, AVI, MOV, MKV, WMV
- **Audio:** MP3, WAV, WMA, AAC
- **Document:** Microsoft Word (.doc, .docx), PowerPoint® (.ppt, .pptx), Excel® (.xls, .xlsx); PDF

The following codecs are supported:

- **Image:** JPG, BMP, PNG, GIF
- **Video:** MPEG-2, MPEG-4 (Microsoft MPEG-4 v1-3 is not supported), Motion JPEG, WMV9 (only WMV3/WVC1 is supported)
- **Audio:** LPCM, AAC, MP3, WMA

# Operation Using a Computer

Users can present from a Windows or Mac computer using the ShareLink 200 software. This section covers the following:

- [Connecting a Computer to the ShareLink 200 N](#)
- [Setting Up the ShareLink 200 Software](#)
- [Using the ShareLink 200 Software](#)

**NOTE:****Mac computer minimum system requirements:**

- Dual Core, 1.4 GHz processor or better
- Mac OS X 10.7 - 10.10
- Graphics card with 64 MB VRAM or better

**Windows computer minimum requirements:**

- Dual Core, 1.8 GHz processor or better
- Microsoft Windows XP SP2, 7, or 8
- Graphics card with 64 MB VRAM or better

## Connecting a Computer to the ShareLink 200 N

There are two ways to connect a computer to the ShareLink 200 N: wirelessly, through an external WAP, or wired through a network device.

### Connecting through an External WAP

1. Ensure that the external WAP and the ShareLink 200 N are wired to the same network.
2. Ensure that the ShareLink 200 N is powered on and that wireless network capability is enabled on your computer.
3. Open the wireless networks on your PC and connect to the external WAP.

### Connecting through a Network Hub, Switch, or Router

1. Ensure that your computer is connected to the network through a hub, switch, or router.
2. Connect the RJ-45 connector of the ShareLink 200 N to the network device using an RJ-45 cable.

# Setting Up the ShareLink 200 Software

There are two options for operating the ShareLink 200 software:

- Run the **Lite version** of the software directly from the embedded Web pages (see [Running the ShareLink 200 Lite Software](#) below).
- Download and install the **Pro version** of the software (see [Downloading and Installing the ShareLink 200 Pro Software](#) on the next page).

To see a list of differences between the Lite and Pro software, click the information (i) icon on the landing page (see figure 7). An information window opens as shown at right.

Lite Software vs. Pro Software		
	Lite Software	Pro Software
No Installation Required	✓	
Screen Sharing	✓	✓
Video Sharing		✓
Share on Multiple Screens	✓	✓
WebShare	✓	✓
Advanced Settings		✓

## Running the ShareLink 200 Lite Software

1. Ensure that the computer is connected to the ShareLink 200 N device, either through an external WAP or through a physical network connection. The computer and the ShareLink 200 N must be on the same network.
2. Launch your Web browser and enter the IP address of the ShareLink in the browser.

**NOTE:** The IP address is shown on the standby screen (see [figure 4, 4](#), page 5).

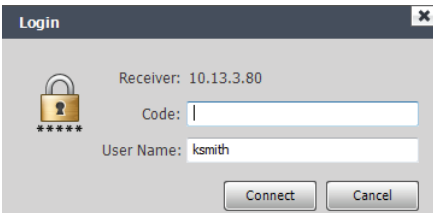
The ShareLink 200 N landing page opens as shown below:



**Figure 7.** ShareLink 200 N Landing Page

3. Click **Windows** (1) or **Mac** (3), depending on your operating system, to launch the software.
4. Follow the instructions on the Web browser to run the the executable ShareLink 200 software file. When the Lite software opens, it automatically attempts to connect to your ShareLink receiver.
5. If the **Login** window opens (as shown at right), enter the login code into the **Code** field and click **Connect**.

**NOTE:** The login code is shown on the standby screen (see [figure 4, 6](#), page 5).



When a connection is established, the software window opens. This window has two sections:

- Share my Screen tab (see [Presenting the Computer Screen](#) on page 12 for instructions).
- Software menu (see [Using the Software Menu](#) on page 14).

## Downloading and Installing the ShareLink 200 Pro Software

The ShareLink 200 software can be downloaded from the embedded Web pages or from the Extron website. Follow the instructions below for your preferred download method.

### Downloading the software from the embedded Web pages

1. Ensure that your computer is connected to the ShareLink 200 N device, either through Wi-Fi or through a physical network connection. The computer and the ShareLink 200 N must be on the same network.
2. Launch your internet browser and enter the IP address of the ShareLink 200 N into the browser.

**NOTE:** The IP address is shown on the standby screen (see **figure 4**, ④ on page 5).

The ShareLink 200 N landing page appears on the browser (see **figure 7** on the previous page).

3. Click **Install Pro software for Windows** (see **figure 7**, ③) or **Install Pro software for Mac** (**figure 7**, ④), depending on your operating system, to launch the software installer on your computer.
4. Follow the instructions on the Web browser to run the the executable ShareLink 200 Software installer file.
5. Follow the steps on the installation wizard to install the software.

### Downloading the software from the Extron website

1. Go to [www.extron.com](http://www.extron.com) and click the **Download** tab at the top of the page (see **figure 8**, ①).



**Figure 8.** Download Page on the Extron Website

2. Click **Software** on the left menu (②).
3. Scroll down to the alphabetical menu and click the letter **S**.  

ALL	#	A	B	C	D	E	F	G	H	I	J	K	L	M	N	O	P	Q	R	S	T	U	V	W	X	Y	Z
-----	---	---	---	---	---	---	---	---	---	---	---	---	---	---	---	---	---	---	---	---	---	---	---	---	---	---	---
4. Scroll down to the software names and look for ShareLink 200. Click **Download** in the ShareLink 200 section.
5. On the next screen (Download Center), enter the requested information and click the download button.
6. When download is complete, open the executable ShareLink 200 Software installer file and follow the steps on the installation wizard to install the software.

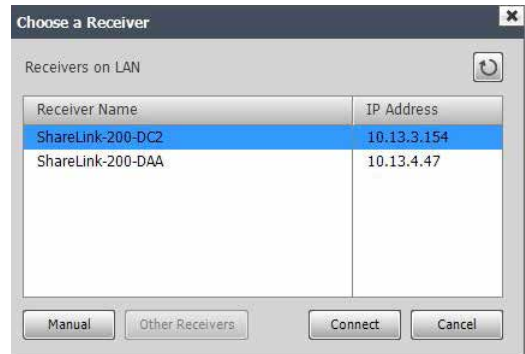


## Connecting to the ShareLink 200 N receiver

Use the software to connect to the ShareLink 200 N receiver as follows:

1. Open the ShareLink 200 software. The software searches for available receivers on your network and the **Choose a Receiver** dialog box opens as shown at right.

**NOTE:** The **Other Receivers** button allows Wi-Fi users to search and connect to ShareLink receivers on other Wi-Fi networks (see **Other Receivers** below for instructions).

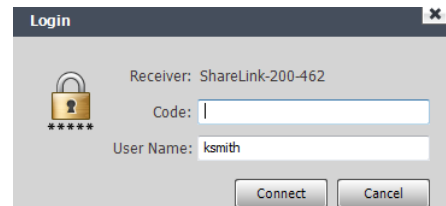


2. Select your ShareLink 200 N device from the **Receiver Name** section and click **Connect**.

**NOTE:** The receiver name is shown on the standby screen. If your ShareLink unit is not listed, click the refresh button. If the device still does not appear, click **Manual** and enter the receiver IP address manually.

3. If the login dialog box appears, enter the login code into the **Code** field and click **Connect**.

**NOTE:** The login code is shown on the standby screen (see **figure 4** on page 5).



**NOTE:** A room file can be created for the ShareLink 200 software to connect automatically to a designated receiver (see **Creating a Room File** on page 16).

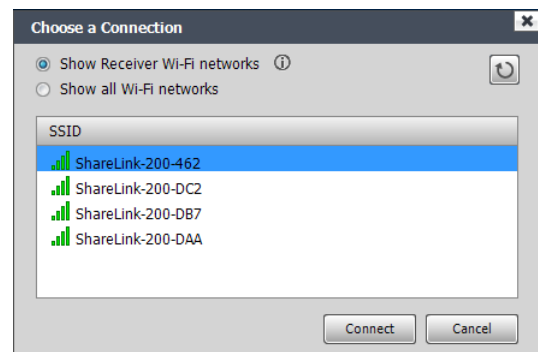
## Other Receivers

The **Other Receivers** button allows Wi-Fi users to search and connect to ShareLink receivers on all available Wi-Fi networks. To do so:

1. Click **Other Receivers**. The **Choose a Connection** dialog box opens as shown below.

- Select **Show Receiver Wi-Fi networks** to see a list of the ShareLink receivers on all available Wi-Fi networks.

**NOTE:** This option filters by SSID name. It only lists receivers whose SSID starts with "ShareLink." If the SSID is changed and no longer starts with "ShareLink," the receiver will not be shown.



- Select **Show all Wi-Fi networks** to see a list of the ShareLink receivers as well as a list of all available Wi-Fi networks.

**NOTE:** If you connect to a Wi-Fi network, and the Wi-Fi network is password-protected, you will be asked to enter the network password.

2. Click on your ShareLink receiver or network, and click **Connect**.

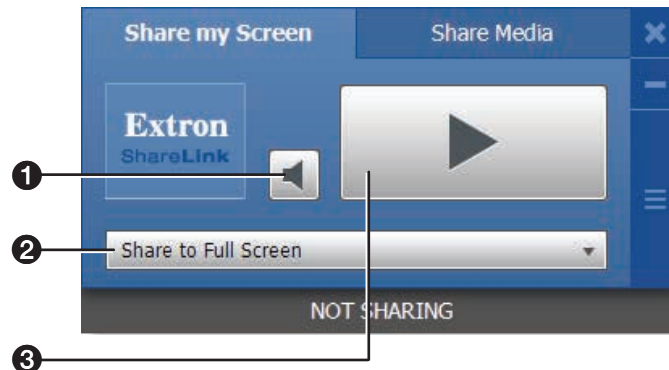
## Using the ShareLink 200 Software

When connection is established, the control screen appears. This screen has three main sections:

- **Share my Screen** tab (see Presenting the Computer Screen below)
- **Share Media** tab (see [Presenting a Media File](#) on the next page)
- Software menu (see [Using the Software Menu](#) on page 14)

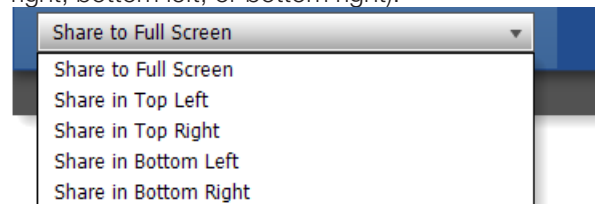
### Presenting the Computer Screen (Share my Screen Tab)

Use the **Share my Screen** tab to present your computer screen on the display device.



**Figure 9. Share my Screen Tab**

- ❶ **Mute button** — Click to mute or unmute the source device audio.
- ❷ **Drop-down list** — Click to see the presentation options shown in figure 10. One computer screen can be shared full screen on the main display (default option), or up to four screens can be shared simultaneously on separate quadrants (top left, top right, bottom left, or bottom right).



**Figure 10. Drop-Down List**

**NOTE:** When multiple screens are shared, audio is output from the first (top left) quadrant only.

- ❸ **Play button** — Click to display the screen as specified in the drop-down menu. The button becomes a Stop button, which can be clicked to stop displaying the screen.

## Presenting a Media File (Share Media Tab)

Use the **Share Media** tab to stream a media file from your computer onto the display device.

**NOTE:** This feature requires the source device and receiver to be on the same subnet. The file will not play if the source device and receiver are not on the same subnet.

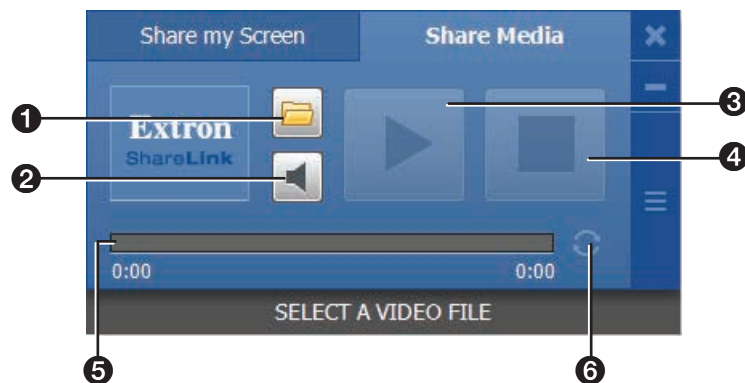
**NOTE:**

The following file formats are supported:

- **Image:** JPG, BMP, PNG, GIF
- **Video:** MP4, MPG, MPEG, MPEG-2 TS, AVI, MOV, MKV, WMV
- **Audio:** MP3, WAV, WMA, AAC

The following codecs are supported:

- **Image:** JPG, BMP, PNG, GIF
- **Video:** MPEG-2, MPEG-4 (Microsoft MPEG-4 v1-3 is not supported), Motion JPEG, WMV9 (only WMV3/WVC1 is supported)
- **Audio:** LPCM, AAC, MP3, WMA

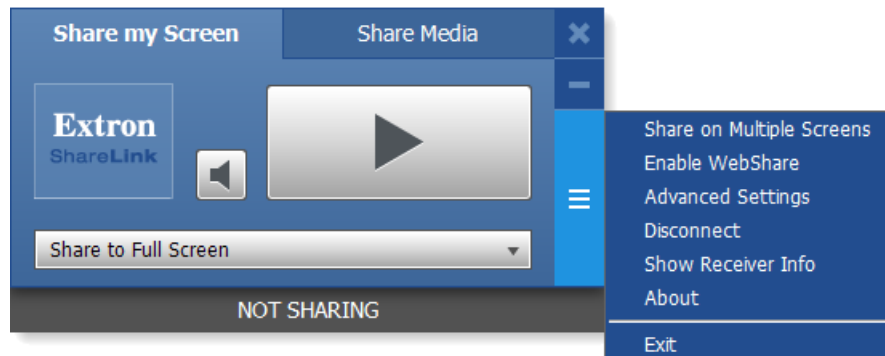


**Figure 11. Share a Video Tab**

- ❶ **File folder icon** — Click to browse for and select a media file.
- ❷ **Volume button** — Click to control the volume of the video or audio file.
- ❸ **Play button** — Click to play the selected media file. This button is disabled until a media file is selected.
- ❹ **Stop button** — Click to stop playing the file. This button is disabled until a file is selected.
- ❺ **Progress bar** — Displays the progress of the video or audio playback. When a file is selected, an icon indicates the playback time on the progress bar. You can click and drag the icon on the progress bar to skip ahead or to go back to a specific point.
- ❻ **Repeat icon** — Click to automatically replay the video or audio when it is finished.

## Using the Software Menu

Click the icon on the bottom right side of the control screen to open the software menu.



**Figure 12. ShareLink 200 Software Menu**

This menu includes the following options:

- **Share on Multiple Screens** — Allows the computer screen or media file to be shared on up to four displays connected to other ShareLink receivers (see [Sharing on Multiple Screens](#) on the next page for instructions).
- **Enable WebShare** — Click to enable WebShare, which allows your computer screen to be shared to connected devices during a presentation (see [Watching a Presentation \(WebShare\)](#) on page 28 for instructions).
- **Advanced Settings** — Click to open a submenu with the following options:
  - **Select Source Display** — Click **Primary Monitor** to present the main screen, or click **Secondary Monitor** to present a screen connected to the main monitor.

Select Source Display	✓ Primary Monitor
Image Quality	Secondary Monitor

### NOTES:

- Not all operating systems support the extended screen function.
- If sharing the secondary monitor, select **Secondary Monitor** prior to sharing in order to keep the software window on the primary monitor.

- **Image Quality** — This option adjusts the image encoding level. **Best** provides better image quality and consumes more network bandwidth.

Image Quality	Normal
Aspect Ratio	✓ Best

- **Aspect Ratio** — Choose **Full Screen** to display the image full screen. Choose **Source Aspect Ratio** to maintain the aspect ratio of the source image (for example, if the source image is 4:3, and the output resolution is 16:9, the image is displayed with black vertical bars on each side).

Aspect Ratio	✓ Full Screen
✓ Enable Tooltips & OSD	Source Aspect Ratio

- **Enable Tooltips & OSD** — Tooltips are shown when the mouse cursor hovers over certain items on the computer screen. Enable this option to show tooltips on the display when sharing your computer screen.
- **Create USB Thumb-drive App** — This feature allows a user to load the ShareLink 200 software into a USB drive, and to run the software directly from the drive (instead of having to install the software on a PC). See [Creating a USB Thumb-drive App](#) on the next page for instructions.
- **ShareLink 200 Device Admin** — Click to go to the ShareLink 200 N admin (configuration) pages (see [Configuring ShareLink 200 N Settings](#) on page 30).

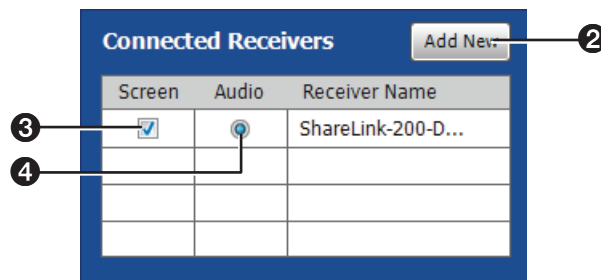
- **Disconnect** — Click to disconnect from any connected receivers.
- **Show Receiver Info** — Click this to show the receiver information (IP address, SSID, and login code) briefly on the screen during a presentation, if necessary. The receiver information overlays on top of the screen for 30 seconds, then disappears.
- **About** — Click to see the ShareLink 200 software version number.
- **Exit** — Click to exit the software program.

## Sharing on Multiple Screens

This feature allows the computer screen or media file to be shared on up to four screens connected to other ShareLink receivers.

To use this feature:

1. Click **Share on Multiple Screens** on the software menu. The **Connected Receivers** dialog box opens:



**Figure 13. Connected Receivers Dialog Box**

2. Click **Add New** (2) to add a new receiver. Up to four receivers can be added.
3. Check the **Screen** (3) checkbox to share content to that receiver. Content is only shared to the selected receivers.
4. Click the **Audio** radio button (4) to share audio to a receiver. Audio can only be shared to one receiver.

## Creating a USB Thumb-drive App

This feature allows a user to load the ShareLink 200 software into a USB drive, and to run the software directly from the drive (instead of having to install the software on a PC).

Follow these steps to load the software into, and to run the software from, a USB drive:

1. Click **Create USB Thumb-drive App** in the ShareLink 200 software **Advanced Settings** menu. The **USB Auto Setup Wizard** window opens.
2. Follow the steps in the wizard screen to save the software to your USB drive. The software requires approximately 25 MB of space.
3. When software loading is complete, a folder named "ShareLink 200" is saved to the USB drive.
4. To run the software:
  - a. Plug in the USB drive to the PC that will be used for presentation.
  - b. Open the folder named "ShareLink 200" that was saved to the USB drive.
  - c. Open the ShareLink200.exe file in the folder to run the software.

## Creating a Room File

A room file can be created for the ShareLink 200 software to connect automatically to a designated receiver. This file provides a shortcut to open the software and directly connect to the receiver.

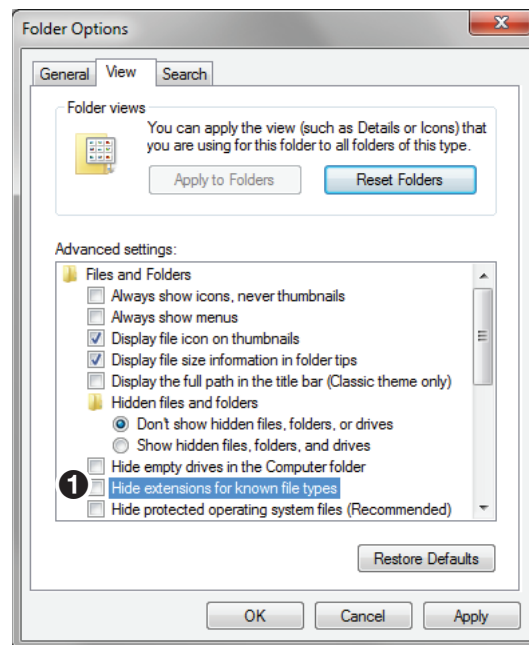
Follow these steps to create the room file:

1. Create and save a text (.txt) file, using a word processing program, and enter the information exactly as it appears below (replace the information in italics with the ShareLink receiver IP address and login code):

```
<?xml version="1.0"?>
<Devices>
<Device>
<IP>192.168.168.171</IP>
<LoginCode>1234</LoginCode>
</Device>
</Devices>
```

**NOTE:** In order to use the room file, the login code must be static (not set to random). To set the login code, see **Device Setup**, ❶ on page 31.

2. Windows users:
  - a. Open **Control Panel > Appearance and Personalization > Folder Options**. The Folder Options dialog box opens (figure 14).
  - b. Click the **View** tab and make sure that **Hide extensions for known file types** option is unchecked as shown in figure 14, ❶.



**Figure 14. Folder Options Window**

3. Go to the text file that you created and change the extension from .txt to .link.
4. Double click or execute the file to open the ShareLink 200 software. The software then connects to the designated receiver automatically.

# Operation Using a Mobile Device

Two mobile apps can be used with the ShareLink 200 N:

- **MirrorOp for Extron ShareLink** (for Android and Apple devices) allows you to present photos, documents, videos, web pages, device screenshots, and the device camera.
- **MirrorOp Sender for Galaxy** (compatible with Samsung™ Galaxy devices only) allows you to mirror your mobile device screen onto the display.

This section covers the following:

- **Downloading MirrorOp for Extron ShareLink**
- **Using MirrorOp for Extron ShareLink**
- **Downloading MirrorOp Sender for Galaxy**
- **Using MirrorOp Sender for Galaxy**

## Downloading MirrorOp for Extron ShareLink

This app is supported by Android and Apple mobile devices, including iPad® and iPhone®. Follow these steps to download the app:

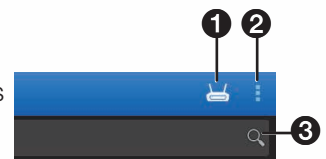
1. Open the Google Play™ app store on your Android device, or the App Store™ on your Apple mobile device.
2. Search for **MirrorOp for Extron ShareLink**.
3. Install the app on your mobile device.

## Using MirrorOp for Extron ShareLink

### Connecting to a Receiver

Follow these steps to connect your mobile device to the ShareLink 200 N using the app:

1. Ensure that the ShareLink 200 N is powered and connected to the network.
2. Open the Wi-Fi networks list on your mobile device and connect to an external WAP that is on the same network as the ShareLink 200 N. Ensure that the external WAP and the ShareLink are wired to the same network.
3. Open MirrorOp and press the receiver icon (see ❶ at right) on the top right to open the receiver selection window.
4. Select your ShareLink receiver from the discovered receivers list. To refresh the list, drag down and release the receivers list. You may also search for the receiver as follows:
  - If the ShareLink receiver is on the same network and subnet, you can search for it by entering the SSID or IP address in the search bar (❸).
  - If the ShareLink receiver is on a different subnet but on the same network, press the button next to the receiver icon (❷) and enter the IP address manually.



**NOTE:** The receiver icon turns green (🟢) and the main menu appears when the device is connected to a receiver.

## Main Menu Overview

**NOTE:** The images in this section show the mobile app layout for tablets. The layout is arranged differently for smaller devices, such as phones.

The main menu on the left side of the screen contains the following options:

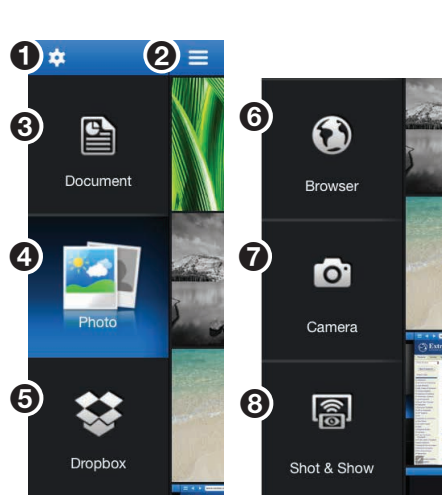


Figure 15. MirrorOp Home Screen

- ❶ **Settings button** – See **Settings** on page 25.
- ❷ **Menu button** – Tap to hide or unhide the main menu.
- ❸ **Document button** – See **Presenting Documents and Photos** on the next page.
- ❹ **Photo button** – See **Presenting Documents and Photos** on the next page.
- ❺ **Dropbox button** – See **Presenting Dropbox Files** on page 22.
- ❻ **Browser button** – See **Presenting Web Pages** on page 23.
- ❼ **Camera button** – See **Presenting the Device Camera** on page 24.
- ❽ **Shot & Show button** – See **Presenting Device Screenshots** on page 24.

**NOTE:** The Dropbox (❺) and Browser (❻) features require internet access (see **Connecting to a Receiver** on the previous page).



## Presenting Documents and Photos

### NOTES:

- The following document file types are supported: Microsoft Word (.doc, .docx), PowerPoint (.ppt, .pptx), Excel (.xls, .xlsx), and PDF.
- The following photo file types are supported: JPEG and PNG files.

### Import the document or photo to your device

There are three ways to import a document or photo file to your mobile device:

- Transfer the file from your computer to your device storage (Android devices)
- Transfer the file from your computer to your device using iTunes® (iOS devices)
- Import the file from an email attachment (Android and iOS devices) (see the next page for instructions)

**NOTE: iOS devices only:** When you open a file using MirrorOp, the file is automatically saved to the app and listed under **Document**.

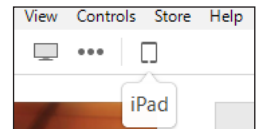
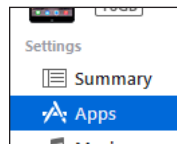
See the instructions below for your preferred method.

### Option 1: Transferring a file from your computer to your device storage (Android devices)

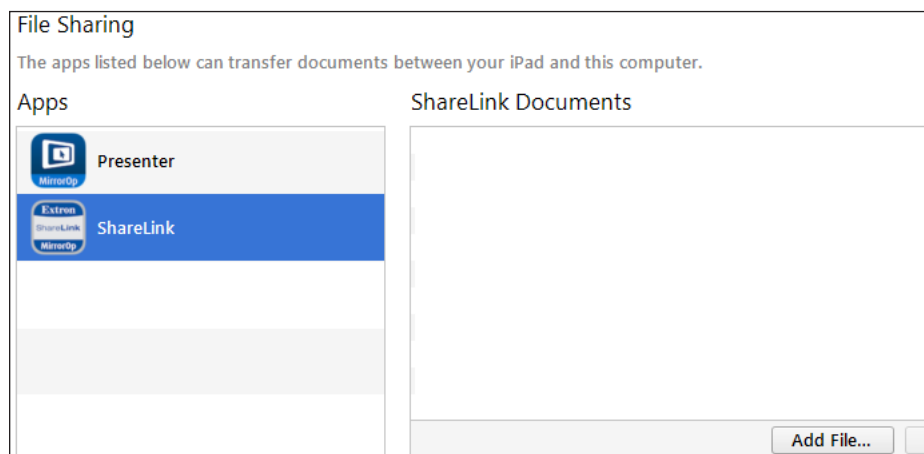
1. Connect the mobile device to your computer.
2. Locate the file in your computer and copy it to the mobile device storage.
3. Proceed to the next section, **Present the Document or Photo**, on page 21.

### Option 2: Transferring a file from your computer to your device storage using iTunes (iOS devices)

1. Connect the iPad or iPhone to your computer.
2. Open iTunes and go to the iPhone or iPad icon as shown at right.
3. Click **Apps** on the left hand Settings menu:



4. In the **Apps** page, scroll down to the **File Sharing** section (figure 16) and click **ShareLink**.



**Figure 16. File Sharing Section in iTunes**

5. Click **Add File**. Browse to and select the file you wish present. The file is listed in the **ShareLink Documents** panel and added to the **Document** section of the app.
6. Proceed to the next section, **Present the Document or Photo**, on page 21.

### Option 3: Import the document from an email attachment

1. On your mobile device, open the e-mail containing the attached file that you wish to present.
2. Import the attachment as follows:

**For Android devices**, you can either:

- **save** the file to the device storage and proceed to the next section (**Present the Document or Photo** on the next page)
- or **open** the file directly from the e-mail using the ShareLink app.

**NOTE:** Options may vary depending on the e-mail app used.

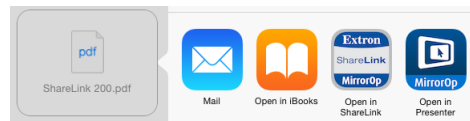


Then, proceed to step 3 of the next section, **Present the Document or Photo**, on the next page.

**For iOS devices:**

**NOTE:** The following steps apply to the native e-mail app in iOS devices. Results and options may vary depending on the e-mail app used.

- a. In the e-mail, locate the attachment icon and press **Tap to Download** (if the download does not start automatically).
- b. When download is complete, press and hold the attachment icon. A window opens, showing installed apps that can open the file (see image at right).
- c. Select **Open in ShareLink**, and proceed to step 3 of the next section, **Present the Document or Photo**, on the next page.



## Present the document or photo

1. Open MirrorOp and select **Document** or **Photo** on the main menu, depending on your file type. All recognized document and photo files (and folders containing these files) are displayed.
2. Select the folder containing the file you wish to present, and select the desired file. The presentation screen appears as shown in figure 17 (for documents) and figure 18 (for photos).
3. Select the **Play** button (4 on figure 17, and 3 on figure 18) to begin presenting. The **Play** button becomes a **Pause** button, which can be pressed to stop the presentation.



Figure 17. Document View Screen

- 1 **Back button** – Exit document and return to the previous screen.
- 2 **Document view screen** – This section is displayed during presentation.
- 3 **Quadrant view button** – Choose whether to present the document full-screen (default) or on a quadrant (top left, top right, bottom left, or bottom right) for multiple user presentations.
- 4 **Play and Pause button** – Start or stop presentation.
- 5 **Annotation tool** – Allows the presenter to make annotations on the document during presentation (see **Making Annotations** on page 25).

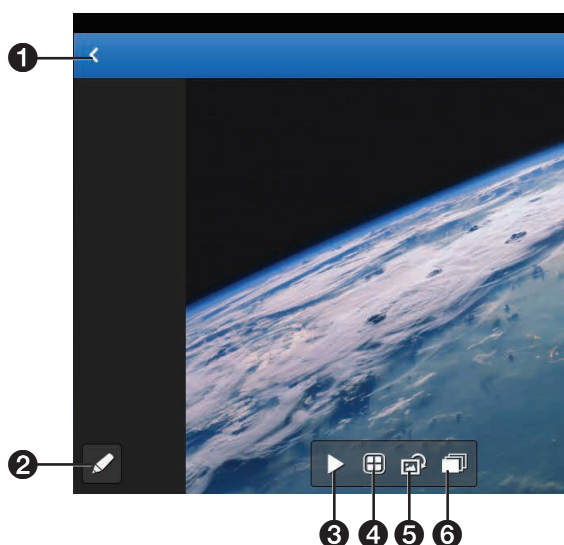


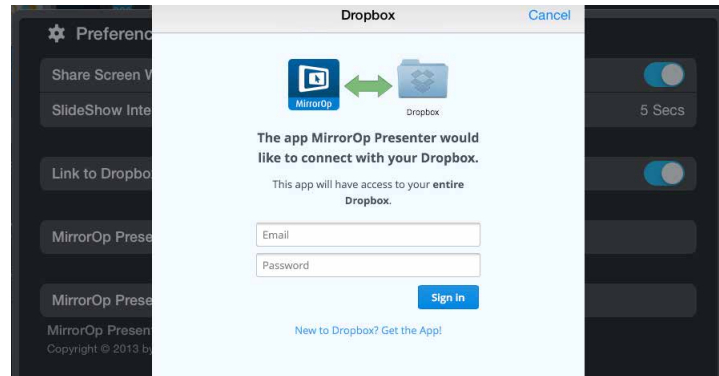
Figure 18. Photo View Screen

- 1 **Back button** – Exit document and return to the previous screen.
- 2 **Annotation tool** – Allows the presenter to make annotations on the image during presentation (see **Making Annotations** on page 25).
- 3 **Play and Pause button** – Start or stop presentation.
- 4 **Quadrant view button** – Choose whether to present the image full-screen (default) or on a quadrant (top left, top right, bottom left, or bottom right) for multiple user presentations.
- 5 **Rotate button** – Rotate the image clockwise.
- 6 **Slideshow button** – Tap this button to start a slideshow of all the images in the current folder.

## Presenting Dropbox Files

To present documents and photos from a Dropbox account:

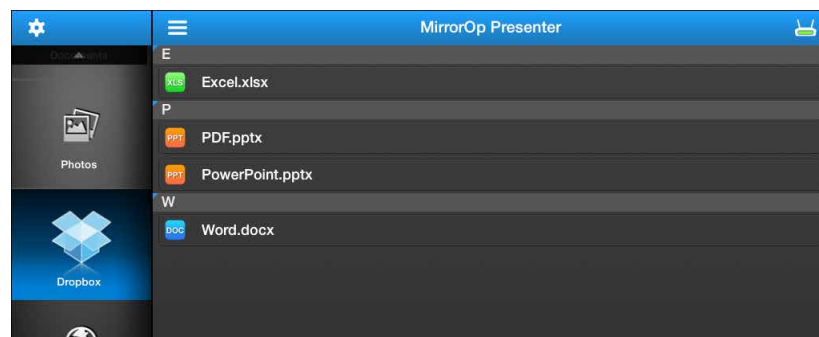
1. Select **Dropbox** on the main menu. A log in dialog box appears (see figure 19).
2. Enter your Dropbox account log in information.



**Figure 19. Dropbox Log In Window**

Once logged in, the folders and files in the Dropbox account appear on the screen.

3. Browse to and select the document or photo you wish to present.

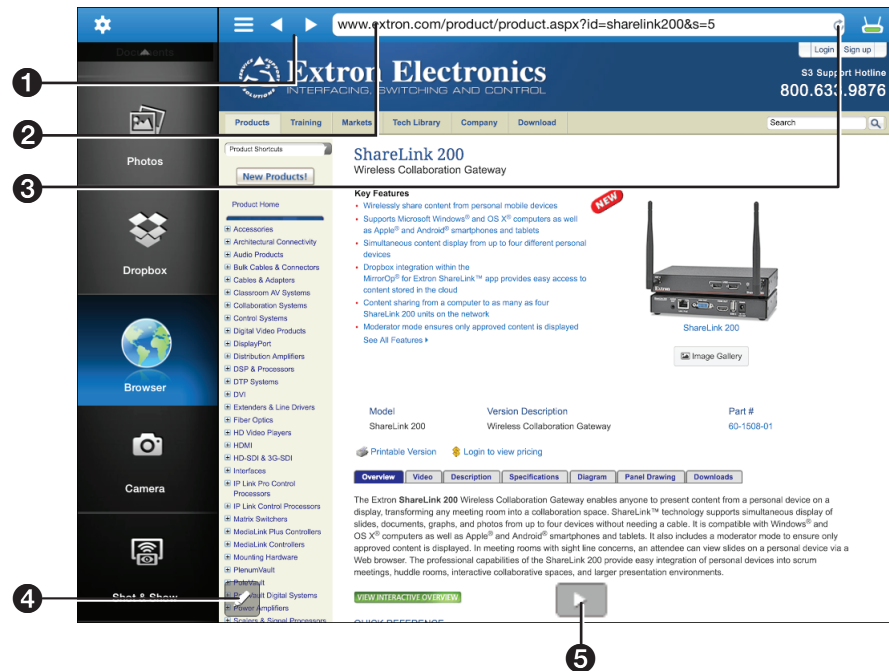


**Figure 20. File Selection Screen**

**NOTE: iOS devices only:** When you open a file from the Dropbox feature, the file is automatically copied to the iPad or iPhone and is listed in the **Document** section of the app.

## Presenting Web Pages

1. Select **Browser** on the main menu. The **MirrorOp** built-in browser opens (figure 21).
2. On the **address bar** (figure 21, ②), enter the Web address for the page you wish to present.
3. Select the **Play** (⑤) button to begin presenting the Web page. The **Play** button becomes a **Pause** button, which can be clicked to stop the presentation.



**Figure 21. MirrorOp Browser**

- ① **Navigation buttons** – navigate between Web pages
- ② **Address bar** – enter the Web address
- ③ **Refresh button** – refresh the Web page
- ④ **Annotation tool** – make annotations on the Web page during presentation (see **Making Annotations** on page 25 for instructions)
- ⑤ **Play and Pause button** – start or stop presentation

## Presenting the Device Camera

1. Select **Camera** on the main menu. The camera view opens (figure 22).
2. Press play (④) to present the camera view on the display.

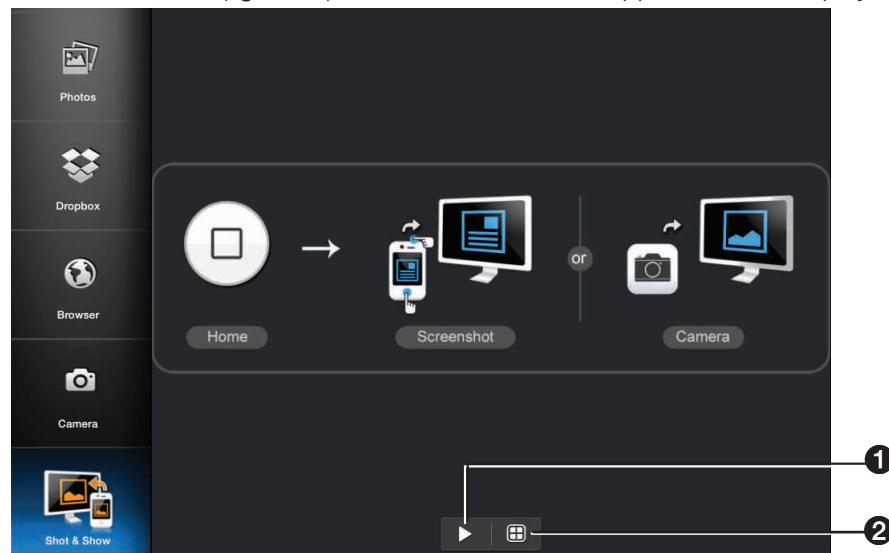


**Figure 22. Camera View**

- ① **Switch camera view button** – Switch between front and rear camera.
- ② **Flash button** – Turn camera flash on or off, if flash is available on the device.
- ③ **Take picture button** – Take a picture using the camera. The picture can also be presented.
- ④ **Play and Pause button** – start or stop presentation.

## Presenting Device Screenshots

1. Choose **Shot & Show** on the main menu and press **Play** (①) in the Shot & Show instruction screen (figure 23). The instruction screen appears on the display.



**Figure 23. Shot & Show Instruction Screen**

2. Press the **Home** button on your mobile device to go to the home screen, and navigate to the screen that is to be shared.
3. Take the screenshot by pressing the appropriate buttons on your mobile device. The screenshot is shared on the display automatically. You can also take a picture with the device camera, and the picture will display automatically.
4. Return to the app to pause the presentation (①) or to change the display quadrant (②).

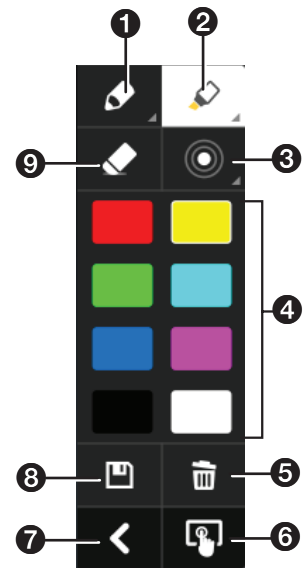
## Making Annotations

The annotation tool allows the presenter to draw or highlight items on the screen. Click the **Annotation** tool icon to expand the **Tool** menu shown below:

- ❶ **Pen** — Make annotations on the screen.
- ❷ **Highlighter** — Highlight items on the screen.

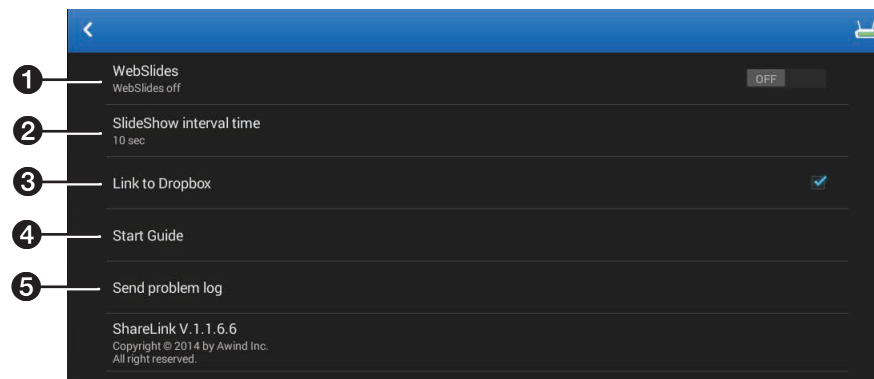
**NOTE: One stroke mode:** Tap the **Pen** or **Highlighter** icon to enable one-stroke mode, indicated by the number “1” on the corner of the icon. This allows you to draw one stroke at a time (the previous annotation is cleared when a new stroke is made).

- ❸ **Size** — Select pen or highlighter size (small, medium, or large).
- ❹ **Color** — Select pen or highlighter color.
- ❺ **Delete all** — Delete all annotations in the current image.
- ❻ **Exit annotation mode**
- ❼ **Hide annotations menu**
- ❽ **Save** — Save current image with annotations. The file is saved as an image file in the mobile device storage.
- ❾ **Eraser** — Erase selected portions of the drawing.



## Settings

Press the **Settings** button to access the following options:



**Figure 24. Settings**

- ❶ **WebShare** — Switch to “On” to enable WebShare. WebShare allows the presentation to be viewed on individual user devices connected to the ShareLink (see [Watching a Presentation \(WebShare\)](#) on page 28).
- ❷ **SlideShow interval time** — Choose the interval time between each photo during a slideshow.
- ❸ **Link to Dropbox** — Link to the Dropbox account on the device. If this option is unchecked, MirrorOp logs out of the current Dropbox account.
- ❹ **Start Guide** — Access the Start Guide that is shown at startup.
- ❺ **Send problem log** — Generate error logs to notify Extron of any problems encountered with the app.



## Downloading MirrorOp Sender for Galaxy

This app is supported by Samsung Galaxy devices. Follow these steps to download the app:

1. Open the Google Play app store on your Galaxy device.
2. Search for **MirrorOp Sender for Galaxy**.
3. Install the app on your mobile device.

## Using MirrorOp Sender for Galaxy

1. Ensure that the ShareLink 200 N is powered and connected to the network.
2. Connect your device to the ShareLink through Wi-Fi (see step 2 of **Connecting to a Receiver** on page 17).
3. Open the app. The discovered receivers list appears as shown at right.
4. Select your ShareLink receiver from the discovered receivers list.

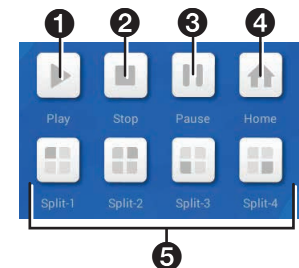
**NOTE:** To refresh the list, drag down and release the list. You may also search for the receiver by entering the SSID in the search bar.



The login screen appears after a receiver is selected.

5. If the login code is activated, enter the login code shown on the standby screen (see **figure 4**, page 5) and press **Connect**. After login, the main menu appears as shown below.

- ① **Play** – Press to begin sharing your screen.
- ② **Stop** – Press to stop sharing your screen.
- ③ **Pause** – Press to pause or unpause screen sharing. This allows the presenter to navigate through the mobile device while the menu screen remains on the display device.
- ④ **Home** – Go to the mobile device home screen.
- ⑤ **Split icons** – For multiple user presentations, choose one of the Split (quadrant) icons to share your screen on the top left, top right, bottom left, or bottom right of the display. This allows up to four users to present their screens on the display simultaneously.





# Using the Embedded Web Pages

The ShareLink 200 N embedded Web pages contain the following features:

- **WebShare:** allows users to view a presentation remotely on their mobile devices or computers.
- **Moderator mode:** allows a designated moderator to play or stop user presentations, and to choose where to display the presentations on the main screen.
- **Admin mode:** allows a designated administrator to configure ShareLink 200 N settings.

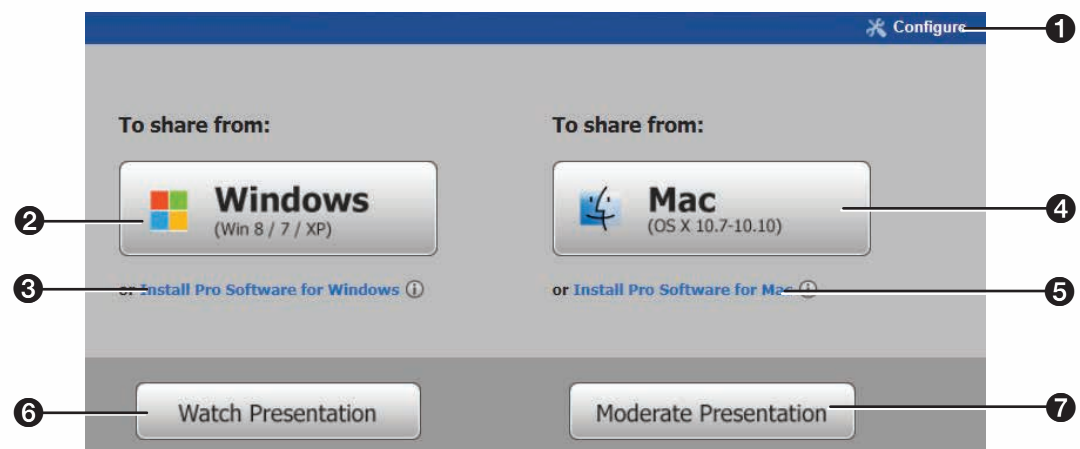
This section covers the following:

- **Opening the Embedded Web Pages**
- **Watching a Presentation (WebShare)**
- **Moderating a Presentation**
- **Configuring ShareLink 200 N Settings**

## Opening the Embedded Web Pages

To access the embedded Web pages, enter the ShareLink IP address (shown on the standby screen) into the Web browser.

The landing page appears on the computer screen as shown here:



**Figure 26. ShareLink 200 N Landing Page**

- ❶ **Configure** — Click to access the Admin pages and configure presentation settings (see **Configuring ShareLink 200 N Settings** on page 30).
- ❷ **Windows** — Click to run the Lite version of the ShareLink 200 software for Windows.
- ❸ **Install Pro Software for Windows**
- ❹ **Mac** — Click to run the Lite version of the ShareLink 200 software for Mac.
- ❺ **Install Pro Software for Mac**
- ❻ **Watch Presentation** — Click to access the WebShare feature. See **Watching a Presentation** on the next page.
- ❼ **Moderate Presentation** — See **Moderating a Presentation** on page 29.

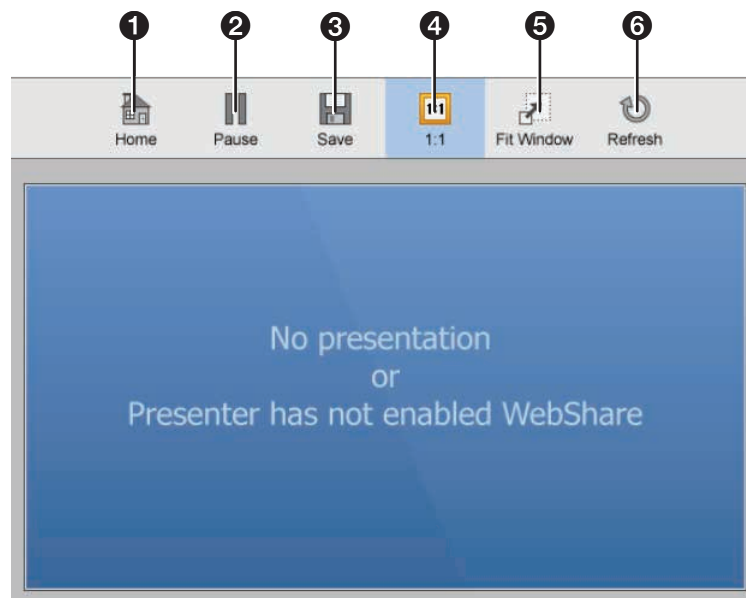
## Watching a Presentation (WebShare)

WebShare allows audience members to view a presentation on their computers or mobile devices using a Web browser. The presenter may broadcast the presentation so that the image shown on the display can be viewed remotely.

**NOTE:** WebShare must be enabled on the client software or mobile app in order for the presentation to be viewed remotely by other users.

Audience members must follow these steps to watch a presentation:

1. Open a web browser on the mobile device or computer and connect to the IP address of the ShareLink 200 N.
2. On the landing page, click **Watch Presentation**. The presentation page (figure 27) opens in the Web browser.
3. Click the 1:1 button (4) to watch the presentation.



**Figure 27. Presentation Page**

- 1 **Home** — Click to go to the ShareLink 200 N landing page.
- 2 **Pause** — Click to pause the presentation.
- 3 **Save** — Click to save the slide being presented.
- 4 **1:1** — Click to watch the presentation.
- 5 **Fit Window** — Click to enlarge the presentation screen to the size of the browser window.
- 6 **Refresh** — Click to refresh the presentation, if necessary.

**NOTE:** By default, the presentation is set for manual refresh. The auto refresh interval can be changed in the Configuration settings (see **WebShare Setup**, 1, on page 35).

# Moderating a Presentation

Moderator Mode allows a single user to control the presentation of all connected users.

**NOTE:** Only one person can log into the moderator page at a time.

To moderate a presentation:

1. Click **Moderate Presentation** on the landing page. The login page appears:

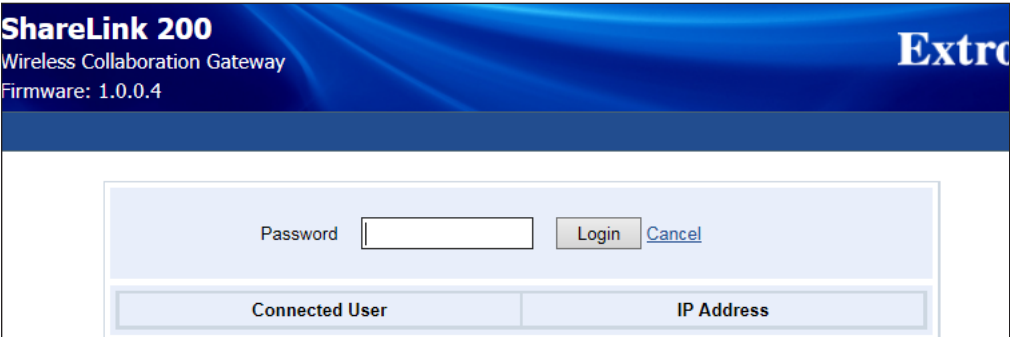


Figure 28. Login Page

2. Enter the default password (**moderate**) and click **Login**.  
This password can be changed (see [Change Passwords](#) on page 36).

After login, the following page appears:

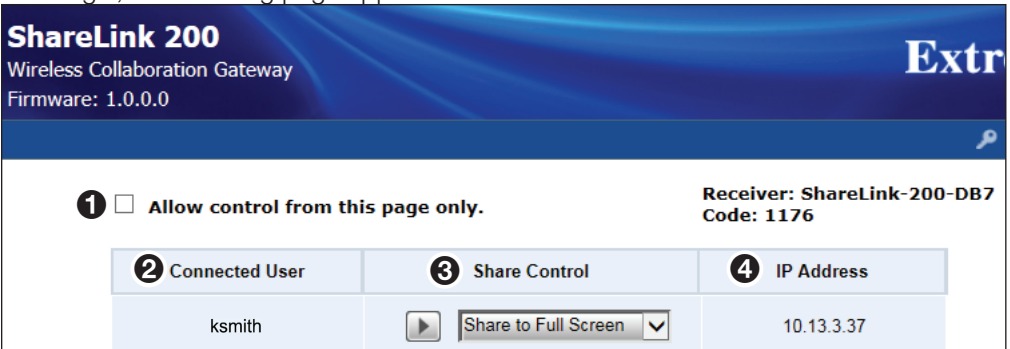


Figure 29. Moderator Page

- 1 **Allow control from this screen only** — This option is unchecked by default, meaning that moderator control is disabled and all connected users are free to share content. Check the box to allow control to the moderator only.

**NOTE:** Individual users may choose to stop showing their screen by selecting the stop button from the client software on their device.

- 2 **Connected User** — This column shows the user names of all users connected to the ShareLink 200 N.
- 3 **Share Control** — This column allows the moderator to do the following:
  - **Play or stop a user presentation:** Click **Play** (play button icon) in the Share Control section next to the Connected User that you wish to present. The row becomes green and the play button becomes a stop button. Click the **Stop** button to stop sharing content.
  - **Choose where on the screen to display the presentation** (full screen, top left, top right, bottom left, or bottom right): Click the drop-down list and select an option (**Share to Full Screen** is selected by default).
- 4 **IP Address** — This column shows the IP address of each connected user device.

## Configuring ShareLink 200 N Settings

To access the ShareLink 200 N admin (configuration) pages:

1. Click the **Configure** button on the top right hand corner of the landing page (**figure 26, 1**, page 27). The **Login** page opens.
2. Enter the default password (**configure**) and click **Login**.

**NOTE:** This password can be changed (see **Change Passwords** on page 36).

After login, the following admin pages appear:

<b>System Status</b>	<b>Model Name</b>	ShareLink 200
<b>Device Setup</b>	<b>Versions</b>	
<b>Network Setup</b>	Firmware Version	1.1.0.0
<b>SNMP Setup</b>	<b>Device Information</b>	
<b>OSD Setup</b>	Host Name	ShareLink-200-00-11-8F
<b>WebShare Setup</b>	Resolution	1280 x 720 (720p)
<b>Change Passwords</b>	Region	WORLDWIDE
<b>Firmware Update</b>	<b>Network Status</b>	
<b>Reset to Default</b>	IP Address	10.13.3.224
<b>Reboot System</b>	Subnet Mask	255.255.0.0
	Default Gateway	10.13.0.100
	Wire MAC Address	00:12:5F:00:11:8F
	<b>Connection Status</b>	
	Sharing Status	Not Sharing
	Total Users	1
	Code	0335
	<b>Date and Time</b>	
	Date	--
	Time	--
	Time Zone	--

**Figure 30. ShareLink 200 N Admin Pages**

- **System Status** — This page appears by default. It displays basic information about the ShareLink 200 N model, network status, connection status, and date and time.
- **Device Setup** — Use this page to adjust the ShareLink 200 N output resolution, login code, date and time, and to reboot settings (see **Device Setup** on the page 31).
- **Network Setup** — Use this page to adjust network settings for the ShareLink 200 N, such as hostname, domain name, IP settings, and DHCP settings (see **Network Setup** on page 32).
- **SNMP Setup** — Use this page to enable or disable SNMP service, and to configure settings for managing the ShareLink 200 N via SNMP (see **SNMP Setup** on page 33).
- **OSD Setup** — Use this page to customize the standby image or reset it to default, and to choose which info to display on the standby screen (see **OSD Setup** on page 34).
- **WebShare Setup** — Use this page to set the auto refresh interval and the Access Password Code for WebShare (see **WebShare Setup** on page 35).
- **Change Passwords** — Use this page to set up the Moderator Control password and the Admin password (see **Change Passwords** on page 36).
- **Firmware Update** — Use this page to update the ShareLink 200 N firmware. (see **Firmware Update** on page 37).
- **Reset to Default** — Use this page to reset the ShareLink 200 N to its factory default settings (see **Reset to Default** on page 37).
- **Reboot System** — Use this page to reboot the ShareLink 200 N (see **Reboot System** on page 38).

## Device Setup

The screenshot shows the 'Device Setup' web interface. On the left is a sidebar menu with options: System Status, Device Setup (highlighted), Network Setup, SNMP Setup, OSD Setup, WebShare Setup, Change Passwords, Firmware Update, Reset to Default, and Reboot System. The main content area is divided into three numbered sections:

- 1 Device Setup**: Contains 'Resolution' (set to 1280 x 720 (720p)) and 'Code' (with options: Disable, Random (selected), and Use the following code (0-9)).
- 2 Date and Time Settings**: Contains 'SNTP/NTP Server Synchronization' (Disable selected), 'Server' (text field), 'Last Sync Time' (--), 'Time Zone' (GMT -8:00 (Pacific Time)), 'Daylight Saving Time' (Enable selected), 'Date' (--), and 'Time' (--).
- 3 Terminal Refresh (Reboot)**: Contains 'Auto' (selected) and 'Time Set' (with three drop-downs for HH:MM:SS).

'Apply' and 'Cancel' buttons are at the bottom right.

Figure 31. Device Setup Panel

### 1 Device Setup panel

- **Resolution** — Change the output resolution (resolution is set to 720p by default). Click the drop-down menu to show other resolutions.
- **Code** — Customize the login code that is displayed on the standby screen at startup (see [figure 4](#), ⑥, page 5). Three options are available for the login code:
  - **Disable** — No login code is required to connect to the ShareLink 200 N.
  - **Random** (default) — A new random code is generated when the last user disconnects from the ShareLink 200 N. For example, User 1 logs in with the current code, then user 2 logs in with the same code. When users 1 and 2 disconnect from the ShareLink, a new code is generated.
  - **Use the following code** — enter a custom 4-digit login code.

### 2 Date and Time Settings panel

- Choose **SNTP/NTP Server Synchronization** to specify the time server, or choose **Disable** to disable this feature.

**NOTE:** SNTP/NTP (Simple Network Time Protocol/Network Tie Protocol) is used for synchronizing the clocks of computer systems over networks.

- **Server** (if SNTP/NTP Server Synchronization is enabled) — Enter the NTP server address into this field.

#### NOTES:

- If the NTP server address is in the form of a URL, a DNS server address is **required** to sync to the NTP server (for example, enter “pool.ntp.org”).
- If the NTP server address is in the form of an IP address, a DNS server address is **not required** to sync to the NTP server.

- **Time Zone** (if SNTP/NTP Server Synchronization is enabled) — Select the appropriate time zone.
- **Daylight Saving Time** — Enable or disable the Daylight Saving Time option.

### 3 Terminal Refresh (Reboot) panel

This feature refreshes the terminal and reboots the system.

- **Auto** (default) — Select this option to allow the device to refresh automatically when no users are connected or sharing content.
- **Time Set** — Schedule a specific time to refresh the terminal (specify that time in the Time field using the drop-down lists).

## Network Setup

System Status Device Setup <b>Network Setup</b> SNMP Setup OSD Setup WebShare Setup Change Passwords Firmware Update Reset to Default  Reboot System	<b>1</b>		<b>Host Name and Domain Name</b>		Host Name	ShareLink-200-00-11-8F			
					Domain Name				
	<b>2</b>		<b>IP Setup</b>		<input checked="" type="radio"/> Obtain an IP address automatically <input type="radio"/> Use the following IP address				
					IP Address	192	168	254	254
					Subnet Mask	255	255	255	0
					Default Gateway	192	168	254	254
					DNS Server	0	0	0	0
	<b>3</b>		<b>DHCP Server Setup</b>		<input checked="" type="radio"/> Auto <input type="radio"/> Disable				
					Start IP	192	168	254	11
					End IP	192	168	254	100
					Subnet Mask	255	255	255	0
					Default Gateway	192	168	254	254
					DNS Server	0	0	0	0
	<b>4</b>		<b>GateKeeper</b>		<input checked="" type="radio"/> All Pass <input type="radio"/> All Block <input type="radio"/> Internet Only				
					<input type="button" value="Apply"/> <input type="button" value="Cancel"/>				

Figure 32. Network Setup

### 1 Host Name and Domain Name panel

- **Host Name** — Enter a hostname for the ShareLink or leave the default name as is.
- **Domain Name** — Enter the domain name for the DNS server.

### 2 IP Setup panel

- **Obtain an IP address automatically** (default setting) — Select this option to obtain an IP address automatically from a DHCP server. The default settings are:  
**IP Address:** 192.168.254.254      **Subnet Mask:** 255.255.255.0  
**Default Gateway:** 192.168.254.254      **DNS Server:** 0.0.0.0
- **Use the following IP address** — Select this option to enter a static IP address.  
**IP Address** — Enter an IP address.  
**Subnet Mask** — Enter the corresponding subnet mask.  
**Default Gateway** — Enter the corresponding gateway address.  
**DNS Server** — Enter the corresponding DNS server address.

### 3 DHCP Server Setup panel

- **Auto** (default setting) — If a DHCP server is available on the network, the ShareLink uses an IP address assigned by the server. If a DHCP server is not available on the network, the ShareLink uses its internal DHCP server to assign IP addresses to network devices. The default settings are as follows: **Start IP:** 192.168.254.11  
**End IP:** 192.168.254.100      **Subnet Mask:** 255.255.255.0  
**Default Gateway:** 192.168.254.254      **DNS Server:** 0.0.0.0

**NOTE:** In Auto mode, you may use the default settings above or customize the settings, if needed.

- **Disable** — Select this option to disable the internal DHCP server.

### 4 GateKeeper panel — Not used for the ShareLink 200 N.

## SNMP Setup

Simple Network Management Protocol (SNMP) facilitates the exchange of basic network management information to provide monitoring, control, and to collect error information.

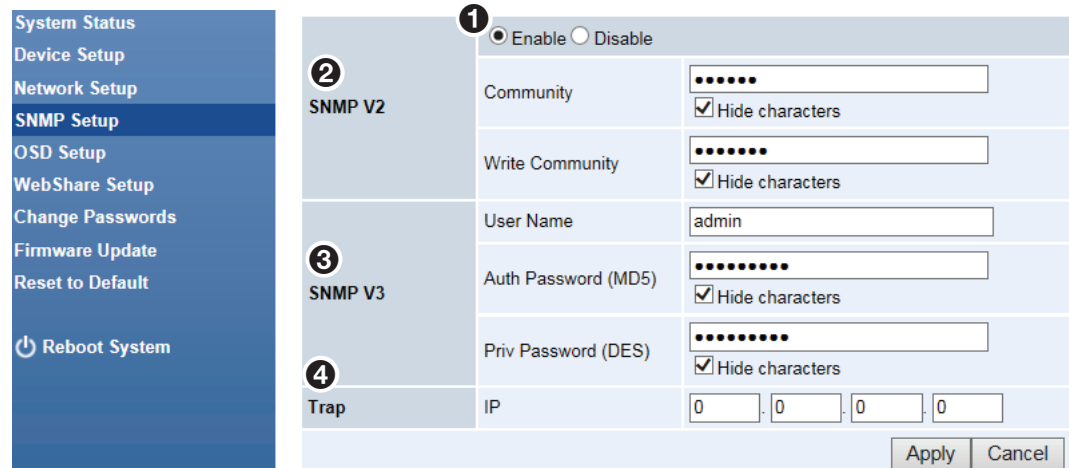
The image shows a web-based configuration interface for SNMP. On the left is a vertical navigation menu with options: System Status, Device Setup, Network Setup, SNMP Setup (highlighted), OSD Setup, WebShare Setup, Change Passwords, Firmware Update, Reset to Default, and a Reboot System button. The main content area is divided into four numbered sections: 1. A header section with 'Enable' (selected) and 'Disable' radio buttons. 2. The 'SNMP V2' section with 'Community' and 'Write Community' text boxes, each with a 'Hide characters' checkbox. 3. The 'SNMP V3' section with 'User Name' (containing 'admin'), 'Auth Password (MD5)', and 'Priv Password (DES)' text boxes, each with a 'Hide characters' checkbox. 4. The 'Trap' section with an 'IP' field consisting of four separate boxes for octets. At the bottom right are 'Apply' and 'Cancel' buttons.

Figure 33. SNMP Setup

- 1 Enable or Disable** — SNMP is enabled by default. To disable SNMP, choose **Disable**.
- 2 SNMP V2 panel** — The SNMP **Community** and **Write Community** values act as passwords, granting public (read-only) and private (read-write) access to the network management system.
  - **Community** — Default value is set to “public”
  - **Write Community** — Default value is set to “private”
- 3 SNMP V3 panel**
  - **User Name** — Configure the user name of the person in charge of managing the ShareLink through SNMP.
  - **Auth Password (MD5)** — Configure the Auth password.

**NOTE:** The default password is “Authadmin.” To change the password, enter a new password and click “Apply.”
  - **Priv Password (DES)** — Configure the Priv password.

**NOTE:** The default password is “Privadmin.” To change the password, enter a new password and click “Apply.”
- 4 Trap panel** — Configure the trap receiver IP.

## OSD Setup

<b>System Status</b> <b>Device Setup</b> <b>Network Setup</b> <b>SNMP Setup</b> <b>OSD Setup</b> <b>WebShare Setup</b> <b>Change Passwords</b> <b>Firmware Update</b> <b>Reset to Default</b>  <b>Reboot System</b>	<b>1</b> <b>Standby Image</b>	Image Name      Default Restore to default File Name      Browse.. Image File Upload Only supports PNG and JPEG file formats with maximum size of 5MB. (Recommended image size of 1920x845)
	<b>2</b> <b>Display Device Info</b>	Show Secondary Tools on Standby <input checked="" type="radio"/> On <input type="radio"/> Off
		Show Device Info on Standby <input checked="" type="radio"/> On <input type="radio"/> Off
		Show Device info at Login <input checked="" type="radio"/> On <input type="radio"/> Off
		Show Login Code on Standby and Login <input checked="" type="radio"/> On <input type="radio"/> Off
		Apply      Cancel

**Figure 34. OSD Setup**

### **1 Standby Image panel**

Use this section to change the background image of the standby screen (see [figure 4](#), page 5).

- **Restore to default** — Click to restore default standby screen image.
- **Image File Upload** — Click **Browse** to select the image file for the standby screen, then click **Image File Upload**.

**NOTE:** The image file can be JPEG or PNG format with a maximum size of 5 MB and recommended resolution of 1920x845.

### **2 Display Device Info panel**

Use this section to choose which items to show on the standby or **Login** screen, including:

- **Show Secondary Tools on Standby** — When this option is set to **Off**, the four icons on the standby screen (USB Player, Whiteboard, Resize, and Calibration) are hidden.
- **Show Device Info on Standby** — When this option is set to **On**, the receiver IP address and SSID are shown on the bottom portion of the standby screen. When this option is set to off, these items are hidden.
- **Show Device Info at Login** — When this option is set to **On**, the IP address, hostname, and login code are overlaid on top of the shared content for 30 seconds. Every time a new user connects to the ShareLink, this Device Info reappears for 30 seconds.  
 Also, on the client software, the “Show Receiver Info” feature is enabled (see [Using the Software Menu](#) on page 14) The **Show Receiver Info** option is in the **Advanced Settings Menu**.  
 Select **Off** to disable this feature as well as the “Show Receiver Info” option on the client software.
- **Show Code on Standby and Login** — When this option is set to **Off**, the login code is hidden from the standby screen. The “Show Receiver Info” option remains enabled, allowing the IP address and hostname to be displayed.



## WebShare Setup

**System Status**  
Device Setup  
Network Setup  
SNMP Setup  
OSD Setup  
**WebShare Setup**  
Change Passwords  
Firmware Update  
Reset to Default  
Reboot System

**1 Auto Refresh Interval (second)**

☒ Manual Refresh

☐ 10 \*recommended maximum concurrent users. (10)  
☐ 20 \*recommended maximum concurrent users. (15)  
☐ 30 \*recommended maximum concurrent users. (20)  
☐ 45 \*recommended maximum concurrent users. (25)  
☐ 60 \*recommended maximum concurrent users. (30)  
☐ 90 \*recommended maximum concurrent users. (35)

**2 Access Password Control**

☒ Disable  
☐ Use the same password as "Code"  
☐ Use the following Code:  (0-9)

**Note**  
For optimal sharing performance, when there are more than 10 concurrent users, it is recommended to try one of the following:

- connect ShareLink to the company network through ethernet
- bridge ShareLink to a router

Apply Cancel

Figure 35. WebShare Setup

### 1 Auto Refresh Interval (second) panel

Use this panel to configure the presentation refresh interval time (the amount of time that elapses before the presentation refreshes).

- **Manual Refresh**
- **10 - 90** (seconds) — Select the best option for the amount of users.

### 2 Access Password Control panel

Use this panel to disable or configure the WebShare access password (this is the password required when connecting to the ShareLink 200 N through WebShare):

- **Disable** — Select to disable the password. This allows users to connect to the ShareLink 200 N through WebShare without a password.
- **Use the same password as "Code"** — Select this option to make the WebShare access password the same as the Code on the standby screen.
- **Use the following Code** — Enter a custom code to use as the WebShare access password.

## Change Passwords

<b>1 Moderator Control</b>		
Enter New Password	<input type="text"/>	Apply
Confirm New Password	<input type="text"/>	
<b>2 Configure</b>		
Enter New Password	<input type="text"/>	Apply
Confirm New Password	<input type="text"/>	

**Figure 36. Change Passwords**

### **1 Moderator Control panel**

Use this panel to change the moderator control password. This password is used to access the moderator page.

1. In the Enter New Password field, enter the desired password.
2. Enter the password again in the Confirm New Password field.
3. Click **Apply** to activate the new moderator control password.

### **2 Configure panel**

Use this panel to change the Configure (admin) password. This password is used to access the **Configuration** pages.

1. In the Enter New Password field, enter the desired password.
2. Enter the password again in the Confirm New Password field.
3. Click **Apply** to activate the new admin password.

## Firmware Update

System Configuration

Export System configuration

**1**

Firmware Version 1.1.0.0

Release Date 01/29/2015

System requires reboot after firmware update. Stop sharing before proceeding with update.

File Name  **2**

Figure 37. Firmware Update

### 1 Export System Configuration

Use this section to export or import the system configuration file.

Export System configuration:

- **Export** — Export the system configuration to a configuration file.

**NOTE:** This option does not export the custom standby image (if one has been loaded on the standby screen).

- **Import** — Import the system configuration file to the ShareLink 200 N.

### 2 Firmware Update

Use this section to update the ShareLink 200 N firmware. Follow these instructions to update the firmware.

1. Download latest firmware file from the Extron website (See [Downloading ShareLink 200 N Firmware](#) on page 41).
2. Click **Browse...** to browse to the firmware file location, and select the firmware file.
3. Click **Update** to start firmware update. A warning message and counter are shown on the screen. After a few minutes, “Complete” is shown on the screen.

## Reset to Default

Reset to Default

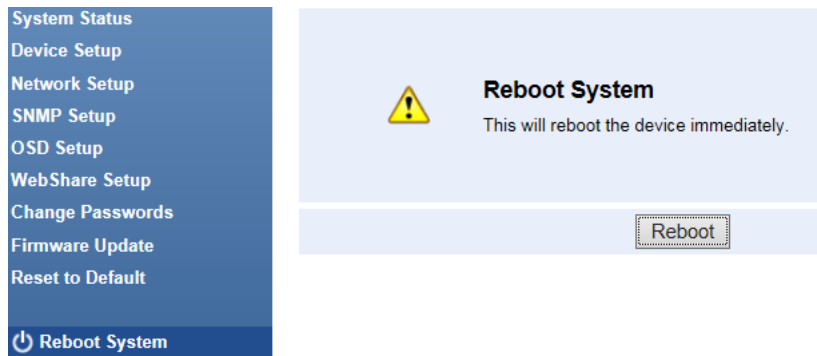
This will restore the device to the factory default settings.

Figure 38. Reset to Default

Click **Apply** to restore factory default settings.

You can also restore factory default settings using the reset button on the bottom of the ShareLink 200 N (see [Bottom Panel Features](#) on page 4).

## Reboot System



**Figure 39. Reboot System**

Click **Reboot** to reboot the ShareLink 200 N automatically.

# Reference Information

This section covers the following:

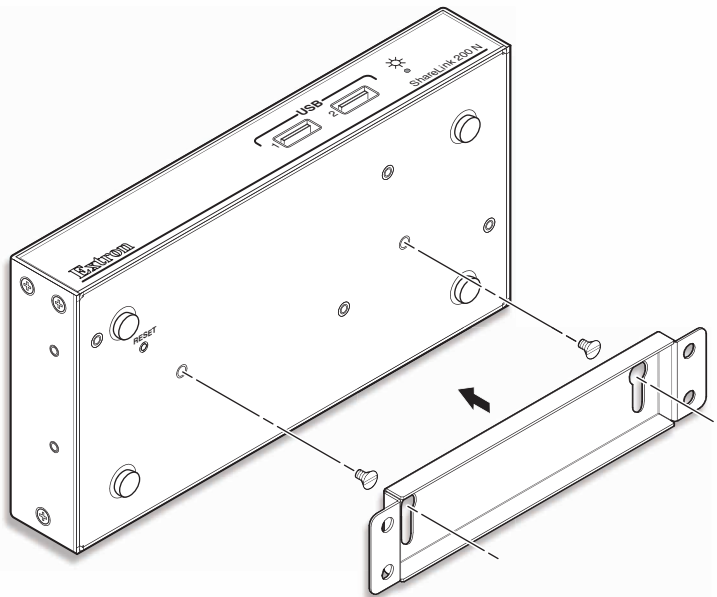
- **Mounting**
- **Downloading ShareLink 200 N Firmware**

## Mounting

### Wall Mounting

Follow these steps to mount the ShareLink 200 N on a wall using the included wall mount kit:

1. Secure the bracket to the wall using the four supplied bracket screws. Be sure to install the bracket with the large keyhole facing upward as shown below.
2. Tighten the two small mounting screws on the bottom panel of the ShareLink 200 N as shown below.
3. Insert the screwheads into the wall mount bracket. Ensure that the ShareLink 200 N receiver sits securely on the bracket.



**Figure 40.** ShareLink 200 N Wall Mount Kit

## Rack Mounting

### UL Guidelines for Rack Mounting

The following Underwriters Laboratories (UL) guidelines are relevant to the safe installation of these products in a rack:

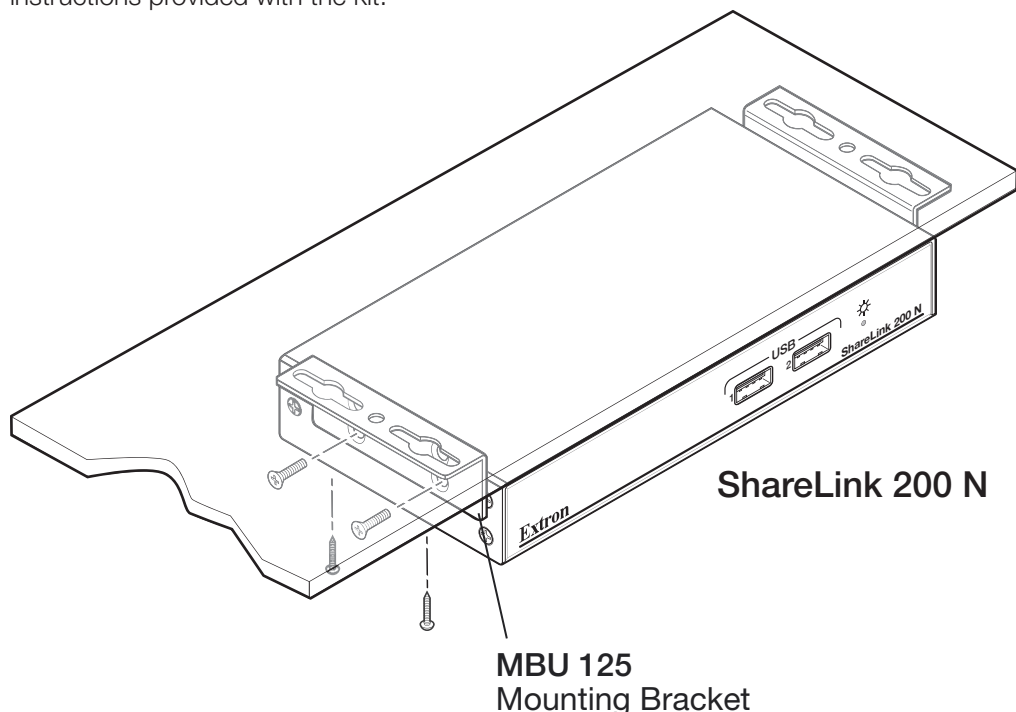
- **Elevated operating ambient temperature** — If the unit is installed in a closed or multi-unit rack assembly, the operating ambient temperature of the rack environment may be greater than room ambient temperature. Therefore, install the equipment in an environment compatible with the maximum ambient temperature (TMA = +122 °F, +50 °C) specified by Extron.
- **Reduced air flow** — Install the equipment in the rack so that safe operation and adequate air flow is provided to the unit.
- **Mechanical loading** — Mount the equipment in the rack so that a hazardous condition is not achieved due to uneven mechanical loading.
- **Circuit overloading** — Connect the equipment to the supply circuit and consider the effect that circuit overloading might have on overcurrent protection and supply wiring. Consider the equipment nameplate ratings when addressing this concern.
- **Reliable earthing (grounding)** — Maintain reliable grounding of rack-mounted equipment. Pay particular attention to supply connections other than direct connections.

### Rack Mounting Procedure

The ShareLink 200 N can be mounted in a rack, using an optional Extron rack mounting kit (see [www.extron.com](http://www.extron.com) for part numbers). Follow the instructions provided with the kit.

## Under-desk and Furniture Mounting

The ShareLink 200 N can be mounted under a desk or podium (see figure 41), using an optional Extron mounting kit (see [www.extron.com](http://www.extron.com) for part numbers). Follow the instructions provided with the kit.



**Figure 41.** ShareLink 200 N with Optional MBU 125

## Downloading ShareLink 200 N Firmware

**Extron Electronics**  
INTERFACING, SWITCHING AND CONTROL

Login | Sign up  
S3 Support Hotline  
800.633.9876

Products Training Markets Tech Library Company Download Search

Download Home

**Software**  
Dante Controller  
DSP Configurator  
Software  
Global Configurator  
Global Configurator  
Professional  
GUI Configurator  
GUI Designer  
IP Intercom HelpDesk  
Software  
PCS  
TouchLink for iPad  
XTP System  
Configuration Software  
Control **Firmware** Drivers  
HID Modules

**Resources**  
GUI Design Resources  
TouchLink Touchpanel  
Themes  
Architectural Design  
Resources

### Download Center

Firmware (146 files)

ALL # A B C D E F G H I J K L M N O P Q R S T U V W X Y Z

Archives

Please consult Release Notes for important compatibility information and history.

Description	Part Number	Version	Date	Size	
<b>Annotator</b> Firmware for the Annotator <a href="#">Release Notes</a>	19-2153-50	2.26	Mar. 11, 2014	3.3 MB	<a href="#">Download</a>
<b>Annotator 300</b> <b>Updated</b> Firmware update for Annotator 300 <a href="#">Release Notes</a>	49-202-01	1.01	Nov. 13, 2014	42.4 MB	<a href="#">Download</a>
<b>AVT 100N</b> <a href="#">Release Notes</a>	19-1532-01	2.05	Jan. 24, 2008	1.9 MB	<a href="#">Download</a>

**Figure 42. Firmware Link on the Download Tab**

To download the latest firmware for the ShareLink 200 N:

1. Visit [www.extron.com](http://www.extron.com) and click the **Download** link at the top of the page.
2. Click **Firmware** on the left sidebar menu.
3. On the Download Center screen, locate the section for the ShareLink 200 N firmware.
4. (Optional) click **Release Notes**. These notes show the issues that are addressed by the latest update. If these issues do not affect you, you may decide not to upgrade the firmware.
5. Click the **ShareLink 200 Download** link.
6. On the next screen, enter the requested user information, then click **Download**.
7. Follow the instructions on the rest of the download screens to save the executable firmware file to your computer. Note the location to which the file was saved.
8. In Windows Explorer or another file browser, locate the downloaded executable file, and double-click to open it.
9. Follow the instructions on the Installation Wizard screens to install the new firmware on your computer. A Release Notes file and a set of instructions for updating the firmware are also loaded.

# Extron Warranty

Extron Electronics warrants this product against defects in materials and workmanship for a period of three years from the date of purchase. In the event of malfunction during the warranty period attributable directly to faulty workmanship and/or materials, Extron Electronics will, at its option, repair or replace said products or components, to whatever extent it shall deem necessary to restore said product to proper operating condition, provided that it is returned within the warranty period, with proof of purchase and description of malfunction to:

**USA, Canada, South America,**

and Central America:  
Extron Electronics  
1230 South Lewis Street  
Anaheim, CA 92805  
U.S.A.

**Japan:**

Extron Electronics, Japan  
Kyodo Building, 16 Ichibancho  
Chiyoda-ku, Tokyo 102-0082  
Japan

**Europe and Africa:**

Extron Europe  
Hanzeboulevard 10  
3825 PH Amersfoort  
The Netherlands

**China:**

Extron China  
686 Ronghua Road  
Songjiang District  
Shanghai 201611  
China

**Asia:**

Extron Asia Pte Ltd  
135 Joo Seng Road, #04-01  
PM Industrial Bldg.  
Singapore 368363  
Singapore

**Middle East:**

Extron Middle East  
Dubai Airport Free Zone  
F12, PO Box 293666  
United Arab Emirates, Dubai

This Limited Warranty does not apply if the fault has been caused by misuse, improper handling care, electrical or mechanical abuse, abnormal operating conditions, or if modifications were made to the product that were not authorized by Extron.

**NOTE:** If a product is defective, please call Extron and ask for an Application Engineer to receive an RA (Return Authorization) number. This will begin the repair process.

**USA:** 714.491.1500 or 800.633.9876  
**Asia:** 65.6383.4400

**Europe:** 31.33.453.4040  
**Japan:** 81.3.3511.7655

Units must be returned insured, with shipping charges prepaid. If not insured, you assume the risk of loss or damage during shipment. Returned units must include the serial number and a description of the problem, as well as the name of the person to contact in case there are any questions.

Extron Electronics makes no further warranties either expressed or implied with respect to the product and its quality, performance, merchantability, or fitness for any particular use. In no event will Extron Electronics be liable for direct, indirect, or consequential damages resulting from any defect in this product even if Extron Electronics has been advised of such damage.

Please note that laws vary from state to state and country to country, and that some provisions of this warranty may not apply to you.

Extron Headquarters	Extron Europe	Extron Asia	Extron Japan	Extron China	Extron Middle East	Extron Korea	Extron India
+1.800.633.9876 (Inside USA/Canada Only) Extron USA - West +1.714.491.1500 +1.714.491.1517 FAX	+800.3987.6673 (Inside Europe Only) +31.33.453.4040 +31.33.453.4050 FAX	+65.6383.4400 +65.6383.4664 FAX	+81.3.3511.7655 +81.3.3511.7656 FAX	+86.21.3760.1568 +86.21.3760.1566 FAX	+971.4.299.1800 +971.4.299.1880 FAX	+82.2.3444.1571 +82.2.3444.1575 FAX	1800.3070.3777 (Inside India Only) +91.80.3055.3777 +91.80.3055.3737 FAX
Extron USA - East +1.919.850.1000 +1.919.850.1001 FAX							