



Office of the Vice Chancellor for Research and Graduate Education  
UNIVERSITY OF WISCONSIN-MADISON

Office of Campus Research Cores

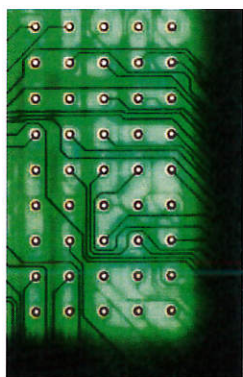
# Directory of Resources for Researchers

<https://resources.research.wisc.edu>

One searchable site for discovering shared resources including equipment, instruments, databases, services, training and consultation at UW-Madison.

*mass spectrometry*

Search



The **Office of Campus Research Cores** is a new initiative from the Office of the Vice Chancellor for Research and Graduate Education (OVCERGE) to enhance access to and support of research services at UW-Madison.

Cores provide access to

- > equipment & instruments
- > databases & software
- > technologies
- > field sites & facilities
- > services & training
- > expertise & consultation

The UW-Madison approach to cores is comprehensive and applies to research services in life sciences, physical sciences, social sciences, the arts and humanities.

Access to cores is through a fair and transparent process that enhances and expands the collaborative capabilities of the research community.

For help or to add a core, contact **Isabelle Girard**, Director  
Office of Campus Research Cores  
[isabelle.girard@wisc.edu](mailto:isabelle.girard@wisc.edu)