

UC, 13 OCT 14



Graduate School
UNIVERSITY OF WISCONSIN-MADISON

MEMO

To: Paul Sacaridiz, Art
Caroline Levine, English
Patricia Keely, Cell and Regenerative Biology
John Mansfield, Bacteriology, Microbiology
Wayne Pferdehirt, Engineering
Ray Vanderby, Materials Science
Russ Coff, Management & Human Resources
John Rudolph, Curriculum and Instruction

From: Wendy Crone, Interim Dean of the Graduate School *W Crone*
Marsha Mailick, Interim Vice Chancellor for Research and Graduate Education *Marsha Mailick*

Date: September 19, 2014

Re: **Ad Hoc Committee on Graduate School Restructuring**

After long discussions last academic year, the Faculty Senate voted to split the leadership positions in the Graduate School and create two positions: a Vice Chancellor for Research and Graduate Education and a Dean of the Graduate School. Now that those separate positions have been created, we are working through the details of the restructuring and how we direct graduate education into the future. As part of this effort, we are launching this Ad Hoc Committee on Graduate School Restructuring. One of our main goals is to enhance communication and feedback between the Graduate School and campus, especially as we implement the reorganization of the research and graduate education enterprises.

This is a pivotal opportunity for us to influence graduate education on our campus for decades to come. As a whole, the committee represents the breadth of graduate programs and training grants that are such a critical part of our campus. You were each chosen because of your deep commitment to graduate education. Thank you for agreeing to help us to further engage with campus stakeholders, including graduate students, to clarify priorities and opportunities for the future.

This ad hoc committee is charged with collecting information from campus stakeholders relevant to the organization of the Graduate School under the new structure, and helping us consider priorities for the future. We ask you to identify stakeholder perceptions of priorities in the new structure, crucial activities for graduate education, activities not currently being conducted but which are needed, activities that are currently being conducted by the Graduate School that are not essential, and issues/topics that should be part of the Graduate School's mission/vision.

The committee will be chaired by Associate Dean Daniel Kleinman. With the committee's guidance, he will lead a series of meetings in Fall 2014 interwoven with fact-finding activities that involve key campus groups. We are asking you to report to us on or before December 15.

xc: Daniel Kleinman, Associate Dean, Graduate School

Graduate School

Bascom Hall 500 Lincoln Drive Madison, WI 53706-1380 grad.wisc.edu

Dean's Office

608-262-2433 • Fax: 608-265-6742

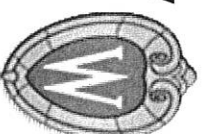
GRADUATE SCHOOL

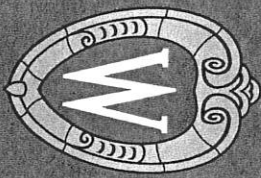
ACADEMIC PLANNING COUNCIL

Currently FP&P calls out the following roles
(suggested changes shown with strikethrough):

“Subjects on which the dean shall share information and consult with the academic planning council include, but are not limited to:

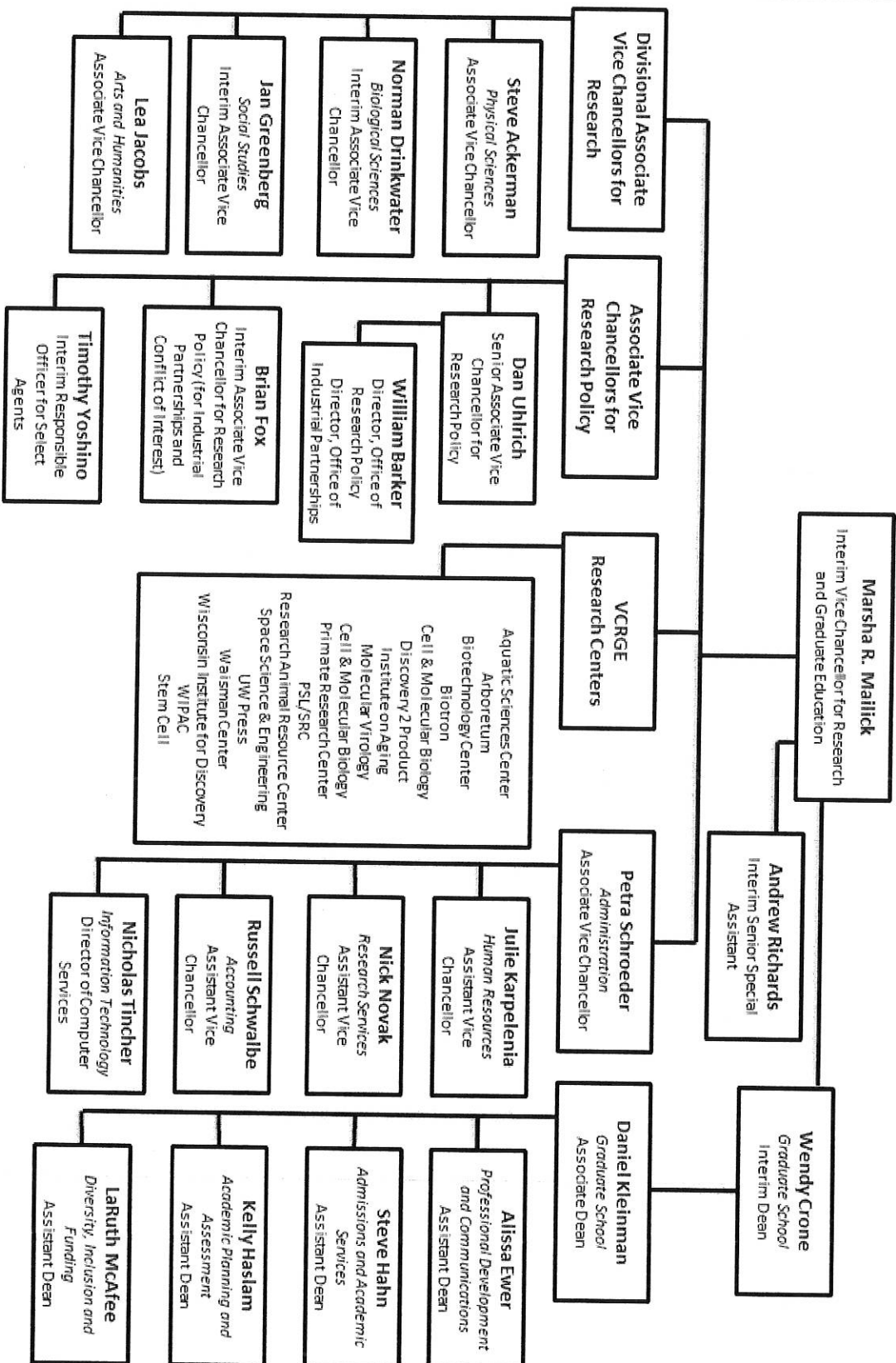
- Program review and the future development or contraction of graduate programs.
- Allocation of flexible resources to various uses, such as fellowships, support of individual investigators, matching funds for facilities grants, funding for new faculty, and awards.
- ~~Policies and budget decisions for service facilities operated by the Graduate School.~~
- ~~Policies and budget decisions relating to research centers administered by the Graduate School.~~
- Appointments of committees of the Graduate School. The council shall report regularly to the Graduate Faculty Executive Committee, and distribute a written report to the graduate faculty at least once each year.”





VCRGE and Graduate School Organization Chart

UC, 13 OCT 14



06/13 Oct 14

